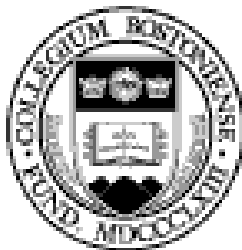


BOSTON COLLEGE FACT BOOK

2002-2003

Containing data from
Fiscal Year 2001-2002,
Academic Year 2001-2002,
and Fall of Academic Year 2002-2003



Current and past issues of the Boston College Fact Book are available
on the Boston College web site at
<http://www.bc.edu/factbook>

Foreword

The *Boston College Fact Book* captures and summarizes much of the important current and historical information about Boston College. The *Fact Book* is intended to serve as a reference for information about the University's faculty, students, alumni, personnel, facilities, and budget. Although the *Fact Book* is generally published annually, this current edition is the first to be published since the 2000-2001 *Fact Book* was released in August 2001.

The 2002-2003 *Boston College Fact Book* reflects year-end data from the 2001-2002 fiscal and academic years. In certain instances, information relating to the fall of 2002 (academic year 2002-2003) is presented. Much of the information contained in the *Fact Book* is cumulative and references annual data for the preceding five or ten year period. Other information is presented in a single year format. Because of the gap in publication of the *Fact Book*, single-year data for the 2000-2001 fiscal and academic years has been preserved in the 2001-2002 *Supplemental Edition*, accessible on the Web at <http://www.bc.edu/factbook>.

We are grateful to the many departments and individuals who provided data for this book - the 30th edition of the *Fact Book*. The majority of the information is extracted from reports produced on a regular basis by the various source offices. Inquiries and comments regarding specific data should be addressed to the responsible office (as noted at the bottom of each item). The *Fact Book* is also available in its entirety at <http://www.bc.edu/factbook>. We welcome your comments and suggestions for additional information that might be included, or improvements in the way information is presented.

James Kreinbring, Editor
Christine Buscemi
Margaret Ryan
February 2003

The Mission of Boston College

Table of Contents

| | Page |
|---|------|
| Foreword | 2 |
| The Mission of Boston College | 2 |
| A Brief History of Boston College | 6 |
| A Boston College Chronology | 7 |
| Boston College Profile | 11 |

Administration & Faculty

| | |
|--|----|
| Board of Trustee Membership 8.31.21..... 05.2/F351.f2.2..... 3.7654..... Co792..... AHANA 14 and Intern..... | 14 |
| Boston College Profile 13.2/52..... f.9..... 0.9.48.96.277.34..... m..... Co669..... Freshman Enrollm..t.by Year and Gender, Full-Time..... 19.9..... | 14 |
| Trustee Associate Membership | 15 |
| The Jesuit Community at Boston College | |
| 39.9.351 f4 0..... 2.50..... C03..... by Type of Previous Institu..on and Genderc 0...4F..... 7 | 7 |

| | Page |
|---|------|
| by Country | 39 |
| Degrees Conferred: | |
| Undergraduate and Graduate by Degree and Gender | 40 |
| Undergraduate by Degree and Number of Majors | 41 |
| Undergraduate by Major | 42 |
| Undergraduate by School and Major | 43 |
| Graduate by School, Degree, Primary Field, and Gender | 44 |
| Undergraduate and Graduate Financial Aid: | |
| Dollars Awarded | 45 |
| Number of Awards | 45 |
| Undergraduates Studying Abroad | 46 |
| Undergraduate Student Graduation and Retention Rates | 47 |
| <i>Senior Survey, Spring 2001:</i> | |
| Academic Fields of Highest Planned Degree | 47 |
| Long-Term Career Plans | 47 |
| Postgraduate Degree Aspirations | 47 |
| Alumni & Development | |
| Alumni Association Board of Directors | 50 |
| Alumni Awards | 50 |
| Boston College Alumni Clubs | 50 |
| Geographic Distribution | 51 |
| Living Alumni by Primary School and Class | 52 |
| Living Alumni by Gender and Class | 54 |
| Gifts to the University | 55 |
| Individual Donors by Giving Club | 55 |
| Alumni Donors by Primary School and Class | 56 |
| Physical Plant | |
| Buildings Related to Boston College Operations | 60 |
| Boston College Properties | 62 |
| Facility Capacities | 63 |
| Dining Facilities | 64 |
| Offices | 65 |
| Classrooms | 65 |
| Summary of Building Use | 65 |
| Residence Hall Capacities | 66 |
| Finance | |
| Highlights of Financial Operations | 70 |
| Condensed Statement of Financial Position | 71 |
| Tuition and Fees | 72 |
| Undergraduate Tuition Restated in 1982-84 Dollars | 73 |

| | Page |
|--|------|
| Statistics | 79 |
| University Archives | 79 |
| Language Laboratory | 79 |
| McMullen Museum of Art | 80 |
| Information Technology | 80 |
| Student Learning and Support Center | 80 |
| Statistics | 80 |
| Telephone Infrastructure | 80 |
| Computer Network Elements | 81 |
| Total Successful Page Deliveries by <i>www.bc.edu</i> Web Server | 81 |
| Research & Sponsored Projects | |
| Highlights of Sponsored Activities | 84 |
| Summary of Sponsored Project Awards | 84 |
| Sponsored Projects, Source and Application of Funding | 84 |
| Sponsored Projects by Department | 85 |
| Number and Dollar Amount of Sponsored Projects Awards Received | 86 |
| Number of Sponsored Project Proposals Submitted | 88 |
| Selected Sponsored Project Awards | 89 |
| Research Institutes and Centers | 90 |
| Athletics | |
| Intercollegiate Athletic Season Highlights | 94 |
| Varsity Sports Records | 97 |
| Intramural Sports Participation | 97 |
| Intercollegiate | 9 |

A Brief History of Boston College

Boston College was founded by the Society of Jesus in 1863, and is one of twenty-eight Jesuit colleges and universities in the United States. With three teachers and twenty-two students, the school opened its doors on September 5, 1864. At the outset and for more than seven decades of its first century, the college remained an exclusively liberal arts institution with emphasis on the Greek and Latin classics, English and modern languages and with more attention to philosophy than to the physical or social sciences. Religion, of course, had its place in the classroom as well as in the nonacademic life of the college.

Originally located on Harrison Avenue in the South End of Boston, where it shared quarters with the Boston College High School, the College outgrew its urban setting toward the end of its first fifty years. A new location was selected in Chestnut Hill, then almost rural, and four parcels of land were acquired in 1907. A design competition for the development of the campus was won by the firm of Maginnis and Walsh, and ground was broken on June 19, 1909, for the construction of Gasson Hall. It is located on the site of the Lawrence farmhouse, in the center of the original tract of land purchased by Father Gasson, and is built largely of stone taken from the surrounding property.

Later purchases doubled the size of the property, with the addition of the upper campus in 1941, and the lower campus with the acquisition of the Lawrence Basin and adjoining land in 1949. In 1974 Boston College acquired Newton College of the Sacred Heart, a mile-and-a-half from the main campus. With fifteen buildings standing on forty acres, it is now the site of the Boston College Law School and residence halls housing 800 freshmen.

Though incorporated as a university since its beginning, it was not until its second half-century that Boston College began to fill out the dimensions of its charter. The Summer Session was inaugurated in 1924; the Graduate School of Arts and Sciences in 1925; the Law School, 1929; the Evening College, 1929; the Graduate School of Social Work, 1936; the College of Business Administration, 1938. The latter, along with its Graduate School established in 1957, is now known as The Wallace E. Carroll School of Management. The Schools of Nursing and Education were founded in 1947 and 1952, respectively. Weston Observatory, founded in 1928, was accepted as a department of Boston College in 1947, offering courses in geophysics and geology.

The Graduate School of Arts and Sciences began programs at the doctoral level in 1952. Now courses leading to the doctorate are offered by twelve Arts and Sciences departments. The

Schools of Education and Nursing, the Carroll Graduate School of Management, and the Graduate School of Social Work also offer doctoral programs.

In 1927 Boston College conferred one earned bachelor's degree and fifteen master's degrees on women through the Extension Division, the precursor of the Graduate School of Arts and Sciences, the Evening College, and the Summer Session. By 1970 all undergraduate programs had become coeducational. Today women students comprise more than half of the University's enrollment.

In 1996 the Evening College became the College of Advancing Studies, offering a master's degree as well as the bachelor's degree. The university's longest presidency, 24 years, came to an end when Father J. Donald Monan became chancellor and was succeeded in the presidency by Father William P. Leahy.

During the decade of the nineties, the Boston College campus has been changed in significant ways. The University has completed several major construction projects, including the expansion and renovation of Higgins Hall, the home of the Biology and Physics Departments; updating of residence halls on the upper campus and Newton campus; and the construction of a new office building for faculty and administrative units on lower campus. These projects have added 260,000 square feet to Boston College facilities and have resulted in on-campus housing for more than 80% of the undergraduates currently attending Boston College.

In recent years, major advances have also occurred in student selectivity, as well as faculty research and scholarship. For instance, between 1996 and 2002, freshman applications increased from 16,501 to 21,133, and the middle range SAT scores of admitted students increased from 1200-1340 to 1250-1390. During this same period, the dollar amount of sponsored project awards received by the University more than doubled, and the number of research centers and institutes grew from six to twenty-one.

Since 1996, the University's endowment has grown from \$590 million to approximately \$1 billion, the result of successful investment strategies and the *Ever to Excel* campaign, which has raised more than \$400 million in cash and pledges to date.

Source: University Historian and Public Affairs

A Boston College Chronology*

- 1857** Father John McElroy, S.J., purchased property in the South End of Boston for a new college.
- 1863** Gov. John A. Andrews signed the charter of Boston College, April 1. First meeting of the Boston College trustees was held on July 6.
- 1864** Boston College opened on September 5, with Father John Bapst, S.J., as president and Father Robert Fulton, S.J., as dean. Twenty-two students admitted.
- 1877** First Commencement was held. Nine students received A.B. degrees, June 28.
- 1883** *The Stylus*, the College literary magazine, founded.
- 1907** Father Thomas Gasson, S.J., named president; purchased 31 acre Lawrence farm in Chestnut Hill for new campus.
- 1913** Gasson Hall completed. First graduation held at the Heights, June 18. Four classes enrolled in Gasson in September.
- 1918** Conscription and voluntary enlistment for World War I reduced the College enrollment to 125 in October, down from 671 two years earlier.
- 1919** Boston College's won its first major football victory, 5-3 over favored Yale at New Haven. First issue of *The Heights*, student weekly, printed November 17.
- 1923** Baseball team beat Holy Cross 4-1 before 30,000 at Braves Field, June 18.
- 1924** Summer School started.
- 1925** Graduate School of Arts and Sciences started.
- 1928** Bapst library opened, the fourth of the early Maginnis and Walsh buildings. Weston Observatory, the seismological station, founded.
- 1929** Law School opened at 11 Beacon Street, Boston. Evening College started as "Boston College Intown" at 126 Newbury Street, Boston.
- 1935** Greek requirement for the A.B. degree dropped.
- 1936** Graduate School of Social Work opened at Newbury Street.
- 1938** School of Management opened at Newbury Street as the "College of Business Administration."
- 1940** Cotton Bowl vs. Clemson (3-6) first bowl game.
- 1941** Cardinal O'Connell purchased the Liggett estate, the upper campus, and gave it to the College.
- 1946** To accommodate post war enrollment, army surplus barracks became dormitories on the site of present Campion Hall; a larger office/classroom building was erected on the site of McGuinn, and a recreation building on the site of Cushing Hall.
- 1947** Construction begun on the first permanent building since the completion of Bapst in 1928, to house the College of Business Administration (occupied in September 1948). The School of Nursing opened at 126 Newbury Street.
- 1949** College acquired small reservoir (lower campus). Hockey team won national title at Colorado Springs.
- 1951** Lyons Hall was completed in July.
- 1952** The School of Education opened in September in Gasson Hall. Doctoral programs were begun in Economics, Education, and History, the beginning of increased emphasis on graduate education.
- 1954** Law School moved to St. Thomas More Hall on the Chestnut Hill campus.
- 1955** Claver, Loyola, and Xavier Halls opened, first campus residences constructed by BC. The School of Education moved into Campion Hall.
- 1957** Graduate School of Management founded. Alumni Stadium dedicated September 21.
- 1958** Latin no longer required for the A. B. degree. The College of Arts and Sciences Honors Program and the Scholar of the College Program were begun. The original gymnasium, Roberts Center, and the first hockey rink, McHugh Forum, were opened.
- 1959** The Board of Regents, advisory to the trustees and administration, was established.
- 1960** The Nursing School occupied its campus building, Cushing Hall. Three more student residences, named for the early bishops of Boston, Cheverus, Fenwick, and Fitzpatrick, were completed.
- 1961** McElroy Commons opened.
- 1963** The Boston College Centennial Convocation was addressed by President John F. Kennedy on April 20. The Self-Study of the College of Arts and Sciences led to a new core curriculum, a reduction in the course load, election of department chairmen, the establishment of Educational Policy committees, and sabbaticals.
- 1964** Carney Hall opened. Welch, Williams, and Roncalli residences were occupied.
- 1966** Higgins Hall was dedicated in November.
- 1968** The Board of Regents joined the Jesuit trustees to form the Board of Directors, October 8. The Black Talent Program was started, precursor to AHANA Student Programs.

PHOTO

Boston College Profile

Undergraduate Admission (Class of 2006)

| | |
|-----------------------------|--------------|
| Applicants | 21,133 |
| Enrollees | |
| Men | 1,150 |
| Women | 1,165 |
| Total Freshman Class | 2,315 |

Enrollment (Full- and Part-Time; Fall 2002)

| | |
|-----------------------------------|---------------|
| Undergraduate | 8,916 |
| Advancing Studies (undergraduate) | 774 |
| Graduate & Professional | 4,607 |
| Total Enrollment | 14,297 |

Degrees Conferred (Academic Year 2001-02)

| | |
|-----------------------------------|--------------|
| Undergraduate | 2,214 |
| Advancing Studies (undergraduate) | 97 |
| Graduate & Professional | 1,488 |
| Total Degrees Conferred | 3,799 |

ADMINISTRATION & FACULTY

PHOTO

Gregory P. Barber, '69

Chairman

Gregory P. Barber & Associates, Inc.

Peter W. Bell, '86

Chairman and Chief Executive Officer

StorageNetworks, Inc.

* **Geoffrey T. Boisi, '69**

Vice Chairman

J. P. Morgan Chase & Company

Daniel S. Hendrickson, S.J.
Department of Philosophy

Officers of the University Fall 2002

President

William P. Leahy, S.J.

Chancellor

J. Donald Monan, S.J.

Executive Vice President

Patrick J. Keating

Academic Vice President and Dean of Faculties

John J. Neuhauser

Vice President for University Mission and Ministry

Joseph A. Appleyard, S.J.

Senior Vice President for University Relations

Mary Lou DeLong

Secretary of the University

Joseph P. Duffy, S.J.

Senior Vice President

James P. McIntyre

Financial Vice President and Treasurer

Peter C. McKenzie

Vice President and Assistant to the President

William B. Neenan, S.J.

Vice President for Student Affairs

Cheryl L. Presley

Vice President for Human Resources

Leo V. Sullivan

Source: Department of Human Resources

Academic Administration Fall 2002

John J. Neuhauser, Academic Vice President
and Dean of Faculties

Michael A. Smyer, Associate Vice President
for Research and Dean of the
Graduate School of Arts and Sciences

Patricia E. A. DeLeeuw, Associate Academic
Vice President for Faculties

Rita R. Owens, Associate Academic Vice President
for Technology

The Woods College of Advancing Studies

James A. Woods, S.J., Dean

The College of Arts and Sciences

Joseph F. Quinn, Dean

J. Joseph Burns, Associate Dean

Clare M. Dunsford, Associate Dean

Gilda A. Morelli, Acting Associate Dean

Mary Daniel O'Keefe, O.P., Associate Dean

Barbara A. Viechnicki, Associate Dean
for Administration

The Graduate School of Arts and Sciences

Michael A. Smyer, Dean

Candace Hertzner, Associate Dean

The Lynch School of Education

Mary M. Brabeck, Dean

Joseph M. O'Keefe, S.J., Associate Dean

Mary Ellen Fulton, Associate Dean
for Finance and Administration

The Law School

John H. Garvey, Dean

Sharon Hamby O'Connor, Associate Dean
for Academic Affairs

Henry E. Clay, Associate Dean for Finance
and Administration

Norah Wylie, Associate Dean for Students
Filippa M. Anzalone, Associate Dean
for Library and Computing Services
Elizabeth Rosselot, Assistant Dean for
Admissions and Financial Aid

The Carroll School of Management

Helen F. Peters, Dean

Robert A. Taggart, Associate Dean (Graduate)

Richard T. Keeley, Associate Dean
(Undergraduate)

James Halpin, Assistant Dean for Academic
Counseling

Christine Lunt, Assistant Dean for External
Relations and Career Services

Eugene McMahon, Assistant Dean for
Administration

Warren Zola, Assistant Dean Graduate
Management Program

The School of Nursing

Barbara H. Munro, Dean

Laurel A. Eisenhauer, Associate Dean
(Graduate)

Loretta P. Higgins, Associate Dean
(Undergraduate)

Susan E. Donelan, Assistant Dean for
Administration

The Graduate School of Social Work

Alberto Godenzi, Dean

Thomas Walsh, Interim Associate Dean

Harry E. Dumay, Assistant Dean for
Administration

Regina O'Grady-LeShane, Assistant Dean
for Academic and Student Services

The Summer Session

James A. Woods, S.J., Dean

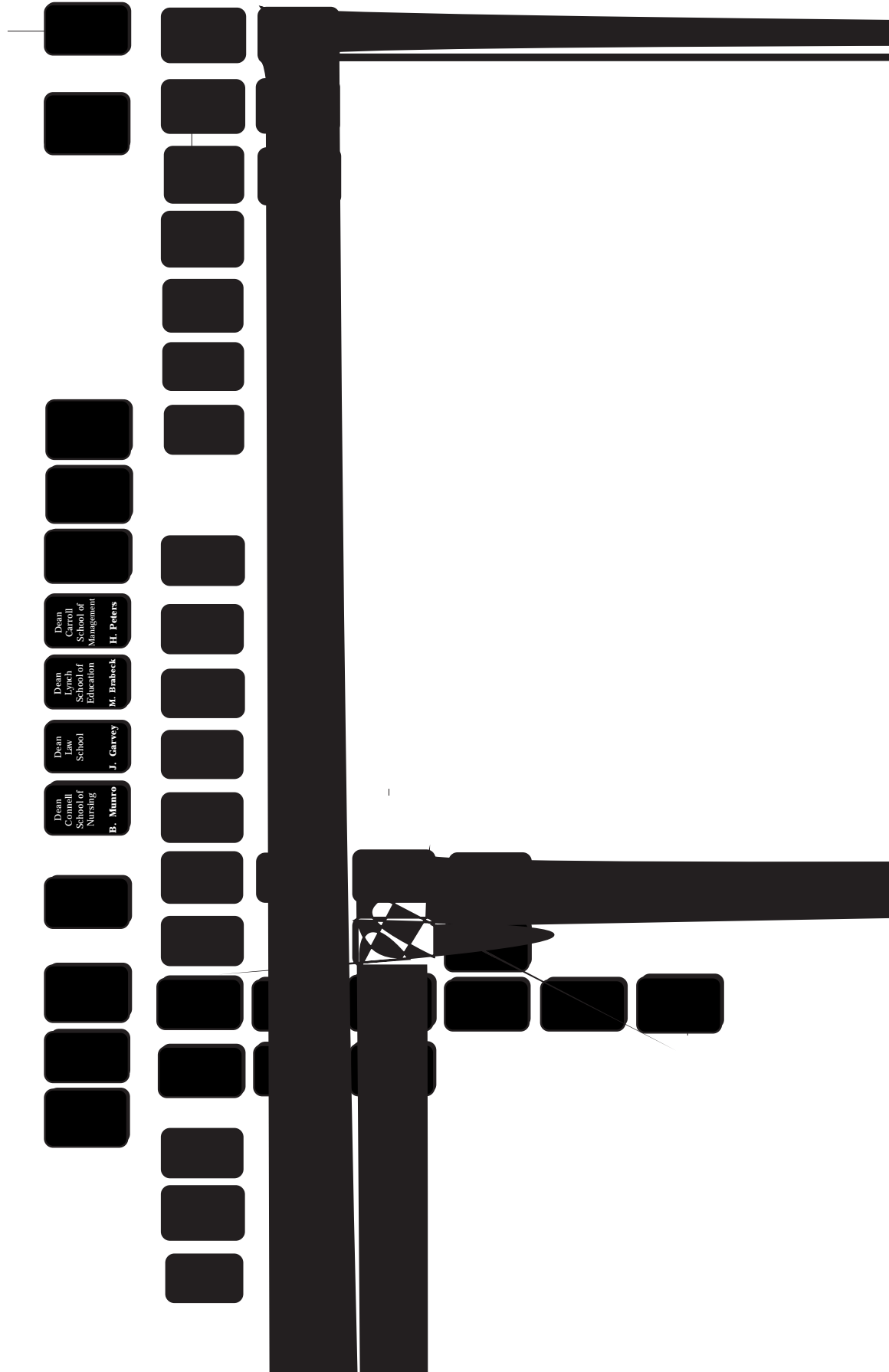
Source: Department of Human Resources

Department Chairpersons Fall 2002

Accounting Greg Trompeter
Biology Marc Muskavitch
Business Law Christine O'Brien
Chemistry David McFadden
Classical Studies Charles F. Ahern, Jr.
Communication Dale Herbeck
Computer Science Robert Muller
Economics Peter Ireland
English Paul Lewis
Finance Alan Marcus
Fine Arts John Michalczyk

Geology and
Geophysics Alan L. Kafka
Germanic Studies Michael Resler
History Peter Weiler
Marketing Victoria Crittenden
Mathematics Gerald E. Keough
Music T. Frank Kennedy, S.J.
Operations &
Strategic Management ... David Murphy
Organizational Studies ... Judith Clair
Philosophy Thomas Hibbs
Physics Kevin Bedell

Political Science Kay Schlozman
Psychology Hiram H. Brownell
Romance Languages
and Literature Franco A. Mormando, S.J.



University Administrators

Fall 2002

Academic Development Center

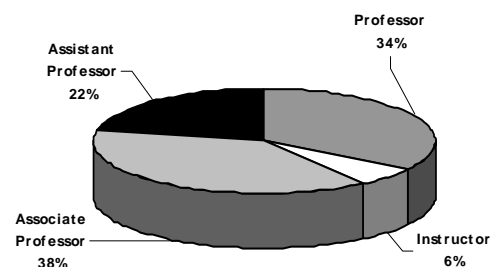
Professional, Administrative, and Support Staff Personnel By Gender, Fall 2002

| | Full-Time Positions | | | | Part-Time Positions | | | | Total Positions |
|------------------------------|---------------------|-------|------|-------|---------------------|-------|------|-------|-----------------|
| | Men | Women | Open | Total | Men | Women | Open | Total | |
| Professional, Administrative | | | | | | | | | |
| Dean of Faculties* | 132 | 206 | 17 | 355 | 14 | 20 | 6 | 40 | 395 |
| Student Affairs | 34 | 51 | 4 | 89 | 17 | 21 | 3 | 41 | 130 |
| Athletics | 53 | 27 | 1 | 81 | 17 | 16 | 3 | 36 | 117 |
| Information Technology | 60 | 32 | 5 | 97 | 0 | 2 | 0 | 2 | 99 |
| Financial Vice President** | 56 | 42 | 8 | 106 | 1 | 2 | 0 | 3 | 109 |
| University Relations | 19 | 44 | 13 | 76 | 1 | 3 | 1 | 5 | 81 |

Faculty by School and Rank*

2001-2002

| School | Professor | | Associate | | Assistant | | Instructor | | Total | |
|-----------------|------------|-----------|------------|-----------|------------|-----------|------------|----------|------------|------------|
| | No. | % | No. | % | No. | % | No. | % | No. | % |
| Arts & Sciences | 147 | 37 | 145 | 37 | 85 | 22 | 18 | 5 | 395 | 100 |
| Education | 22 | 38 | 20 | 33 | 17 | 28 | 1 | 1 | 60 | 100 |
| Law | 21 | 47 | 19 | 42 | 5 | 11 | - | - | 45 | 100 |
| Management | 24 | 25 | 35 | 37 | 28 | 29 | 9 | 9 | 96 | 100 |
| Nursing | 7 | 16 | 21 | 48 | 6 | 14 | 10 | 10 | 44 | 100 |
| Social Work | 4 | 25 | 9 | 45 | 4 | 20 | 3 | 3 | 20 | 100 |
| Total | 225 | 34 | 249 | 38 | 145 | 22 | 41 | 6 | 660 | 100 |



* Includes all full-time regular faculty members.

Source: Office of the Academic Vice President

Full-Time Equivalent Faculty by School*

2001-2002

| School | FTE of Full-Time Faculty | | FTE of Part-Time Faculty | | FTE of Teaching Fellows & Assistants | | Total FTE Faculty | |
|-----------------|--------------------------|------------|--------------------------|------------|--------------------------------------|------------|-------------------|------------|
| | No. | % | No. | % | No. | % | No. | % |
| Arts & Sciences | 361.20 | 60 | 105.33 | 57 | 118.33 | 80 | 584.86 | 62 |
| Education | 52.50 | 9 | 26.00 | 14 | 24.00 | 16 | 102.50 | 11 |
| Law | 46.00 | 7 | 8.33 | 5 | - | - | 54.33 | 6 |
| Management | 91.50 | 15 | 16.66 | 9 | - | - | 108.16 | 12 |
| Nursing | 39.00 | 6 | 4.00 | 2 | 6.00 | 4 | 49.00 | 5 |
| Social Work | 16.50 | 3 | 24.00 | 13 | - | - | 40.50 | 4 |
| Total | 606.70 | 100 | 173.25 | 100 | 148.33 | 100 | 939.35 | 100 |

* Method of computation: three courses equal one full-time faculty member.

Note: Figures representing full-time faculty do not include the following: full-time academic administrators or directors; teaching fellows; special contracts; part-time academic administrators or staff.

Source: Office of the Academic Vice President

Faculty by School and Gender

2001-2002

| School | Women | | Men | | Total No. | % | |
|-----------------|------------|------------|------------|------------|------------|-------|-----|
| | No. | % | No. | % | | Women | Men |
| Arts & Sciences | 111 | 49 | 284 | 68 | 395 | 28 | 72 |
| Education | 29 | 13 | 31 | 7 | 60 | 48 | 52 |
| Law | 17 | 9 | 28 | 6 | 45 | 38 | 62 |
| Management | 24 | 11 | 72 | 16 | 96 | 25 | 75 |
| Nursing | 43 | 20 | 1 | - | 44 | 98 | 2 |
| Social Work | 7 | 3 | 13 | 3 | 20 | 35 | 65 |
| Total | 231 | 100 | 429 | 100 | 660 | | |

Source: Office of the Academic Vice President

Faculty by School and Tenure Status 2001-2002

| School | Tenured Faculty | | Non-Tenured Faculty | | Total | |
|-----------------|-----------------|----|---------------------|----|------------|-----|
| | No. | % | No. | % | No. | % |
| Arts & Sciences | 292 | 73 | 103 | 27 | 395 | 100 |
| Education | 42 | 67 | 18 | 33 | 60 | 100 |
| Law | 40 | 67 | 5 | 33 | 45 | 100 |
| Management | 59 | 60 | 37 | 40 | 96 | 100 |
| Nursing | 28 | 64 | 16 | 36 | 44 | 100 |
| Social Work | 13 | 65 | 7 | 35 | 20 | 100 |
| Total | 474 | | 186 | | 660 | |

Source: Office of the Academic Vice President

Faculty by Highest Earned Degree and Rank 2001-2002

| Degree | Professor | | Associate | | Assistant | | Instructor | | Total | |
|-----------|-----------|-----|-----------|----|-----------|----|------------|----|-------|----|
| | No. | % | No. | % | No. | % | No. | % | No. | % |
| Doctorate | 236 | 100 | 258 | 98 | 127 | 96 | 14 | 50 | 635 | 96 |
| Masters | - | - | 6 | 2 | 5 | 4 | 14 | 50 | 25 | 4 |

Faculty by Rank and Gender 2001-2002

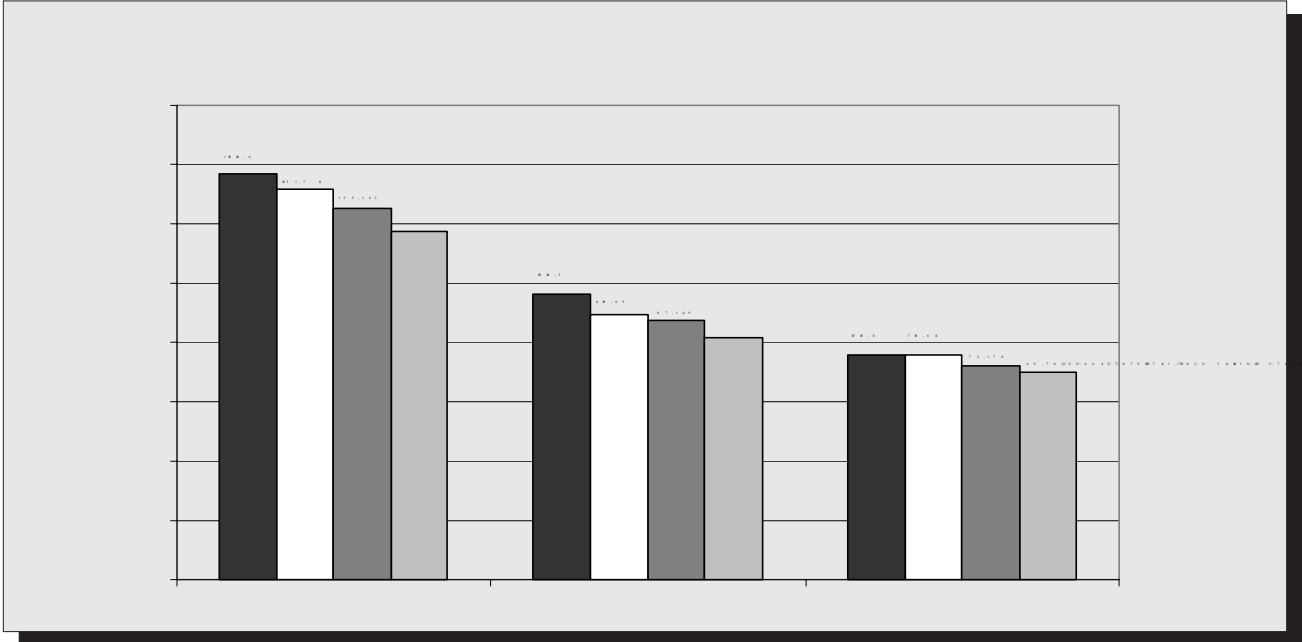
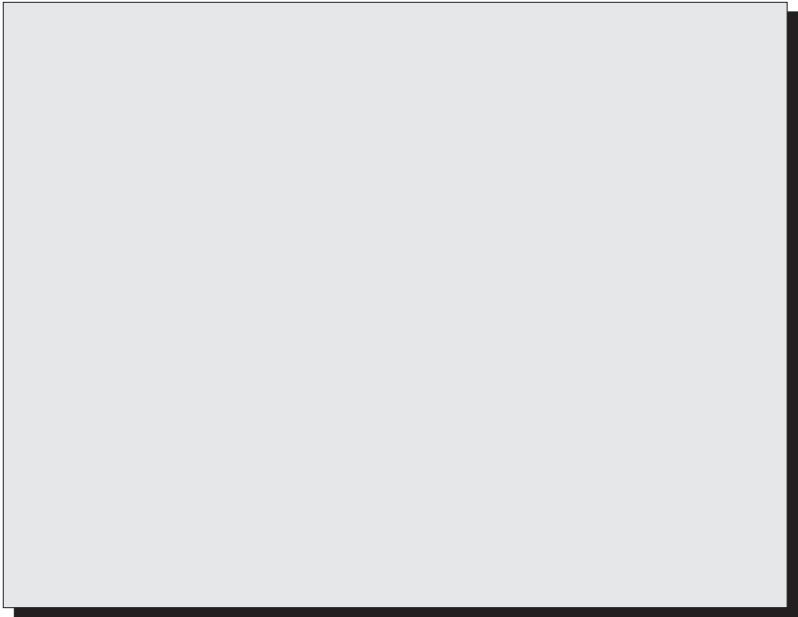
| Rank | Women | | Men | | Total | |
|--------------|------------|------------|------------|------------|------------|------------|
| | No. | % | No. | % | No. | % |
| Professor | 51 | 22 | 174 | 40 | 225 | 34 |
| Associate | 89 | 39 | 160 | 37 | 249 | 38 |
| Assistant | 67 | 29 | 78 | 18 | 145 | 22 |
| Instructor | 23 | 10 | 18 | 4 | 41 | 6 |
| Total | 230 | 100 | 430 | 100 | 660 | 100 |

Source: Office of the Academic Vice President

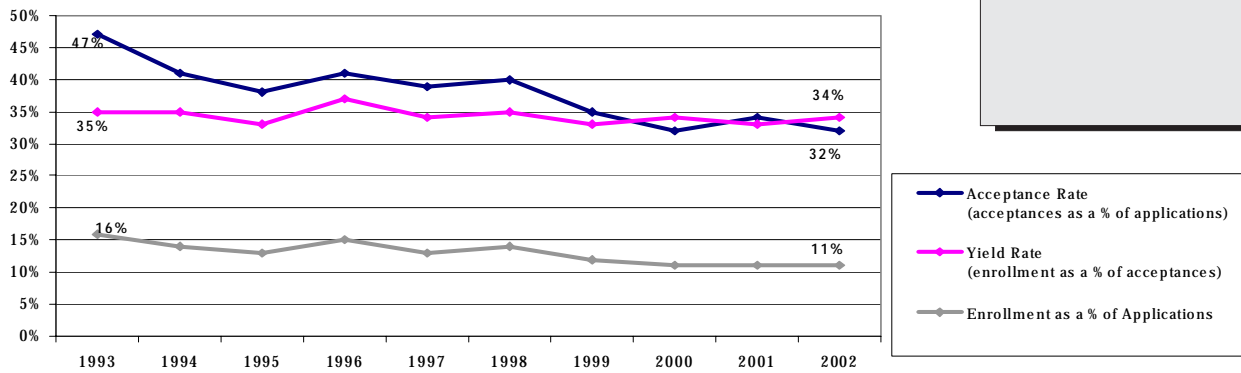
Full-Time Faculty, Teaching Fellows, and Teaching Assistants By School and Department, 2001-2002

| | Full-Time Faculty | Teaching Fellows | Teaching Assistants |
|----------------------------|----------------------|---------------------|------------------------|
| Arts & Sciences | | | |
| Biology | 20 | - | 24 |
| Chemistry | 18 | - | 43 |
| Classics | 4 | - | - |





PHOTO



| Fall | Applications | Acceptances | Acceptances as a % of Applications | Total Enrollment | Enrollment as a % of Acceptances | Enrollment as a % of Applications |
|------|--------------|-------------|------------------------------------|------------------|----------------------------------|-----------------------------------|
| 1993 | 13,112 | 6,179 | 47 | 2,154 | 35 | 16 |
| 1994 | 15,522 | 6,378 | 41 | 2,250 | 35 | 14 |
| 1995 | 16,680 | 6,399 | 38 | 2,140 | 33 | 13 |
| 1996 | 16,501 | 6,750 | 41 | 2,474 | 37 | 15 |
| 1997 | 16,455 | 6,455 | 39 | 2,168 | 34 | 13 |
| 1998 | 16,373 | 6,484 | 40 | 2,247 | 35 | 14 |
| 1999 | 19,746 | 6,976 | 35 | 2,284 | 33 | 12 |
| 2000 | 20,743 | 6,587 | 32 | 2,246 | 34 | 11 |
| 2001 | 19,059 | 6,401 | 34 | 2,103 | 33 | 11 |
| 2002 | 21,133 | 6,850 | 32 | 2,315 | 34 | 11 |

Note: Freshman enrollment reported above is based on deposits received, on or before the deadline set by the Committee on Admission, from

| State | Applications | Acceptances | Enrollment |
|---------|--------------|-------------|------------|
| Alabama | 29 | 10 | 2 |

Top Cross Application Competitor Schools of Enrolling Freshmen Class of 2004

Top 12 Colleges and Universities

Undergraduate Transfer Student Applications, Acceptances, and Enrollment Full-Time

| | Acceptances as a % of | Total | Enrollment as a % of | Enrollment as a % of |
|--|--------------------------|-------|-------------------------|-------------------------|
|--|--------------------------|-------|-------------------------|-------------------------|

Undergraduate Transfer Student Enrollment By Type of Previous Institution and Gender

| Fall* | 2-Year Public | 2-Year Private | 4-Year Public | 4-Year Private | Total | Men | Women | Total |
|-------|------------------|-------------------|------------------|-------------------|-------|-----|-------|-------|
| 1993 | 37 | 12 | 72 | 150 | 271 | 122 | 149 | 271 |
| 1994 | 44 | 8 | 50 | 120 | 222 | 88 | 134 | 222 |
| 1995 | 31 | 6 | 58 | 121 | 216 | 91 | 125 | 216 |
| 1996 | 11 | 1 | 43 | 58 | 113 | 42 | 71 | 113 |
| 1997 | 22 | 5 | 66 | 154 | 247 | 112 | 135 | 247 |
| 1998 | 17 | 8 | 62 | 138 | 225 | 100 | 125 | 225 |
| 1999 | 24 | 4 | 59 | 161 | 248 | 95 | 153 | 248 |
| 2000 | 10 | - | 61 | 71 | 142 | 63 | 79 | 142 |
| 2001 | 9 | 2 | 45 | 76 | 132 | 59 | 73 | 132 |
| 2002 | 3 | 1 | 24 | 43 | 71 | 32 | 39 | 71 |

* Transfer enrollment typically increases 75-125 students second semester.

Source: Office of Undergraduate Admission

Student Credit Hours

By School*

| School | 1997-98 | 1998-99 | 1999-00 | 2000-01 | 2001-02 |
|--|----------------|----------------|----------------|----------------|----------------|
| Undergraduate | | | | | |
| Arts & Sciences | 166,945 | 166,929 | 173,869 | 171,305 | 173,114 |
| Education | 24,436 | 24,557 | 24,982 | 23,885 | 23,654 |
| Management | 67,173 | 67,449 | 66,569 | 64,572 | 63,241 |
| Nursing | 7,351 | 7,146 | 6,928 | 6,316 | 6,751 |
| College of Advancing Studies | 18,539 | 14,514 | 13,970 | 13,725 | 13,543 |
| Total Undergraduate | 281,931 | 280,595 | 286,318 | 279,803 | 280,303 |
| Graduate & Professional | | | | | |
| Graduate Arts & Sciences** | 9,343 | 9,117 | 9,072 | 8,913 | 9,118 |
| Graduate Education** | 12,938 | 14,024 | 14,360 | 12,957 | 11,630 |
| Graduate Management | 13,477 | 13,747 | 13,311 | 14,334 | 14,405 |
| Graduate Nursing** | 1,964 | 2,313 | 2,828 | 2,787 | 2,674 |
| Graduate Social Work | 17,081 | 15,203 | 14,409 | 13,178 | 12,590 |
| Graduate Advancing Studies*** | 1,983 | 2,285 | 2,071 | 1,707 | 1,582 |
| Law | 23,762 | 23,502 | 23,609 | 23,016 | 23,489 |
| Total Graduate & Professional | 80,548 | 80,191 | 79,660 | 76,892 | 75,488 |
| Total | 362,479 | 360,786 | 365,978 | 356,695 | 355,791 |

* Most one semester courses at Boston College carry a value of three credit hours. The figures shown are the sum of fall and spring semester enrollments for each academic year. Summer enrollment is excluded.

** In 1994, the Graduate Schools of Education and Nursing separated from the Graduate School of Arts and Sciences.
80,(Full-TimeF1 1173,0D 0.0212TotalPart-TimeF1 114.0D 0.0212 T32Total)Tj 9 0 0-47m 08 TD 0.0134 Tc50.102ol

Undergraduate, Graduate, and Professional Enrollment, Fall 1998 through 2002 By School, Gender, and Full- and Part-Time

| | Undergraduate Day Schools | | | | | | Graduate & Professional | | | | | | | Univ. | |
|------------------|---------------------------|-------|-----|-------|-------|---------|-------------------------|-------|--------|-------|------|-----|---------|-------|--------|
| | A&S | Mgt. | Ed. | Nurs. | Total | Adv.St. | GA&S | GEd. | GNurs. | GMgt. | GSSW | Law | Adv.St. | Total | Total |
| Fall 1998 | | | | | | | | | | | | | | | |
| Full-Time | 5,577 | 2,288 | 810 | 245 | 8,920 | 262 | 344 | 464 | 71 | 241 | 362 | 825 | 11 | 2,318 | 11,500 |
| Part-Time | - | - | - | 5 | 5 | 669 | 772 | 572 | 84 | 734 | 150 | - | 210 | 2,522 | 3,196 |
| Men | 2,682 | 1,400 | 118 | 9 | 4,209 | 451 | 544 | 262 | 8 | 660 | 73 | 395 | 84 | 2,206 | 6,686 |
| Women | 2,895 | 888 | 692 | 241 | 4,716 | 480 | 572 | 774 | 147 | 315 | 439 | 430 | 137 | 2,814 | 8,010 |
| Total | 5,577 | 2,288 | 810 | 250 | 8,925 | 931 | 1,116 | 1,036 | 155 | 975 | 512 | 825 | 221 | 4,840 | 14,696 |
| Fall 1999 | | | | | | | | | | | | | | | |
| Full-Time | 5,853 | 2,271 | 828 | 236 | 9,189 | 241 | 322 | 469 | 95 | 219 | 346 | 829 | 13 | 2,293 | 11,722 |
| Part-Time | - | - | - | 2 | 2 | 595 | 678 | 587 | 66 | 708 | 138 | - | 193 | 2,370 | 2,967 |
| Men | 2,823 | 1,386 | 123 | 7 | 4,339 | 411 | 525 | 264 | 9 | 622 | 71 | 404 | 77 | 1,972 | 6,722 |
| Women | 3,030 | 885 | 705 | 231 | 4,851 | 425 | 475 | 792 | 152 | 305 | 413 | 425 | 129 | 2,691 | 7,967 |
| Total | 5,853 | 2,271 | 828 | 238 | 9,190 | 836 | 1,000 | 1,056 | 161 | 927 | 484 | 829 | 206 | 4,663 | 14,689 |
| Fall 2000 | | | | | | | | | | | | | | | |
| Full-Time | 5,741 | 2,187 | 785 | 216 | 8,929 | 262 | 295 | 417 | 86 | 244 | 307 | 805 | 9 | 2,163 | 11,354 |
| Part-Time | - | - | - | 1 | 1 | 606 | 732 | 611 | 79 | 712 | 160 | - | 164 | 2,458 | 3,065 |
| Men | 2,766 | 1,394 | 107 | 5 | 4,272 | 461 | 526 | 244 | 7 | 635 | 66 | 392 | 76 | 1,946 | 6,679 |
| Women | 2,975 | 793 | 678 | 212 | 4,658 | 407 | 501 | 784 | 158 | 321 | 401 | 413 | 97 | 2,675 | 7,740 |
| Total | 5,741 | 2,187 | 785 | 217 | 8,930 | 868 | 1,027 | 1,028 | 165 | 956 | 467 | 805 | 173 | 4,621 | 14,419 |
| Fall 2001 | | | | | | | | | | | | | | | |
| Full-Time | 5,850 | 2,148 | 772 | 230 | 9,000 | 260 | 326 | 325 | 83 | 281 | 300 | 813 | 4 | 2,132 | 11,392 |
| Part-Time | - | - | - | - | - | 537 | 689 | 618 | 68 | 692 | 143 | 1 | 167 | 2,378 | 2,915 |
| Men | 2,783 | 1,343 | 129 | 5 | 4,260 | 406 | 518 | 220 | 6 | 653 | 67 | 382 | 78 | 1,924 | 6,590 |
| Women | 3,067 | 805 | 643 | 225 | 4,740 | 391 | 497 | 723 | 145 | 320 | 376 | 432 | 93 | 2,586 | 7,717 |
| Total | 5,850 | 2,148 | 772 | 230 | 9,000 | 797 | 1,015 | 943 | 151 | 973 | 443 | 814 | 171 | 4,510 | 14,307 |
| Fall 2002 | | | | | | | | | | | | | | | |
| Full-Time | 5,895 | 2,045 | 756 | 220 | 8,916 | 248 | 324 | 372 | 98 | 273 | 297 | 806 | 10 | 2,180 | 11,344 |
| Part-Time | - | - | - | - | - | 526 | 712 | 634 | 72 | 700 | 148 | - | 161 | 2,427 | 2,953 |
| Men | 2,889 | 1,264 | 126 | 6 | 4,285 | 401 | 519 | 235 | 5 | 643 | 64 | 367 | 72 | 1,905 | 6,591 |
| Women | 3,006 | 781 | 630 | 214 | 4,631 | 373 | 517 | 771 | 465 | 330 | 381 | 439 | 99 | 2,702 | 7,706 |
| Total | 5,895 | 2,045 | 756 | 220 | 8,916 | 774 | 1,036 | 1,006 | 170 | 973 | 445 | 806 | 171 | 4,607 | 14,297 |

Source: Student Services

AHANA and International Student Enrollment, Fall 2000, 2001, & 2002*

| Undergraduate Day Schools | Men | | | Women | | | Total | | | % of Undergraduate Day School Students | | |
|------------------------------------|------------|------------|------------|--------------|--------------|--------------|--------------|--------------|--------------|--|---------------|---------------|
| | 2000 | 2001 | 2002 | 2000 | 2001 | 2002 | 2000 | 2001 | 2002 | 2000 | 2001 | 2002 |
| Black or African-American | 200 | 202 | 224 | 225 | 221 | 223 | 425 | 423 | 447 | 4.8% | 4.7% | 5.1% |
| Native American | 11 | 10 | 8 | 26 | 29 | 24 | 37 | 39 | 32 | 0.4% | 0.4% | 0.4% |
| Asian | 333 | 356 | 364 | 399 | 404 | 411 | 732 | 760 | 775 | 8.2% | 8.4% | 8.9% |
| Hispanic | 187 | 189 | 205 | 304 | 312 | 335 | 491 | 501 | 540 | 5.5% | 5.6% | 6.2% |
| Other/Not reported | 19 | 34 | 117 | 25 | 40 | 98 | 44 | 74 | 215 | 0.5% | 0.8% | - |
| Subtotal Undergraduate Day Schools | 750 | 791 | 801 | 979 | 1,006 | 993 | 1,729 | 1,797 | 1,794 | 19.4% | 20.0% | 20.6% |
| International | 124 | 105 | 83 | 84 | 81 | 56 | 208 | 186 | 139 | 2.3% | 2.0% | 1.6% |
| Total Undergrad Day | 874 | 896 | 884 | 1,063 | 1,087 | 1,049 | 1,937 | 1,983 | 1,933 | 21.7% | 22.03% | 22.18% |

* Note that 2002 AHANA percentages are of students who reported their race/ethnicity identification. International students include nonresident aliens of all racial and ethnic groups, including caucasian.

Source: Student Services

Full-Time Equivalent Enrollment*

By School, Fall 1993 through 2002

| | 1993 | 1994 | 1995 | 1996 | 1997 | 1998 | 1999 | 2000 | 2001 | 2002 |
|--|---------------|---------------|---------------|---------------|---------------|---------------|---------------|---------------|---------------|---------------|
| Undergraduate | | | | | | | | | | |
| Arts & Sciences | 5,521 | 5,699 | 5,561 | 5,541 | 5,589 | 5,577 | 5,853 | 5,741 | 5,850 | 5,895 |
| Education | 695 | 701 | 698 | 772 | 806 | 810 | 828 | 785 | 772 | 756 |
| Management | 2,172 | 2,270 | 2,269 | 2,339 | 2,276 | 2,288 | 2,271 | 2,187 | 2,148 | 2,045 |
| Nursing | 416 | 408 | 367 | 305 | 250 | 247 | 237 | 216 | 230 | 220 |
| Total Day Students | 8,804 | 9,078 | 8,895 | 8,957 | 8,921 | 8,922 | 9,189 | 8,929 | 9,000 | 8,916 |
| College of Advancing Studies*** | 688 | 682 | 633 | 624 | 531 | 485 | 439 | 464 | 440 | 423 |
| Total Undergraduate | 9,492 | 9,760 | 9,528 | 9,581 | 9,452 | 9,407 | 9,628 | 9,393 | 9,440 | 9,339 |
| Graduate and Professional | | | | | | | | | | |
| Graduate Arts & Sciences** | 1,288 | 599 | 609 | 605 | 592 | 601 | 548 | 539 | 553 | 561 |
| Graduate Education** | - | 494 | 600 | 601 | 600 | 655 | 665 | 621 | 532 | 583 |
| Graduate Management | 378 | 408 | 459 | 455 | 464 | 486 | 455 | 481 | 511 | 506 |
| Graduate Nursing** | - | 102 | 90 | 68 | 87 | 99 | 117 | 112 | 106 | 122 |
| Graduate Social Work | 368 | 398 | 456 | 478 | 463 | 412 | 392 | 360 | 348 | 346 |
| Law | 829 | 830 | 819 | 803 | 826 | 825 | 829 | 805 | 813 | 806 |
| Graduate Advancing Studies*** | - | - | - | 49 | 68 | 81 | 77 | 64 | 60 | 64 |
| Total Graduate & Professional | 2,863 | 2,831 | 3,033 | 3,059 | 3,100 | 3,159 | 3,083 | 2,982 | 2,923 | 2,988 |
| Total University | 12,355 | 12,591 | 12,561 | 12,640 | 12,552 | 12,566 | 12,711 | 12,375 | 12,363 | 12,327 |

Geographic Distribution of Undergraduate Students By State

| State | 1990 | 1995 | 2000 | 2001 | 2002 | State | 1990 | 1995 | 2000 | 2001 | 2002 |
|----------------------|-------|-------|-------|-------|-------|-----------------------|--------------|--------------|--------------|--------------|--------------|
| Alabama | 11 | 13 | 10 | 14 | 11 | Nebraska | 30 | 22 | 22 | 16 | 17 |
| Alaska | 0 | 8 | 4 | 1 | 2 | Nevada | 7 | 11 | 3 | 1 | 4 |
| Arizona | 18 | 25 | 29 | 33 | 37 | New Hampshire | 172 | 165 | 184 | 176 | 162 |
| Arkansas | 7 | 3 | 4 | 1 | 1 | New Jersey | 672 | 858 | 941 | 932 | 938 |
| California | 184 | 408 | 380 | 410 | 403 | New Mexico | 2 | 5 | 12 | 9 | 8 |
| Colorado | 45 | 43 | 57 | 61 | 65 | New York | 1,039 | 1,321 | 1,372 | 1,365 | 1,425 |
| Connecticut | 728 | 881 | 765 | 769 | 752 | North Carolina | 22 | 20 | 26 | 36 | 31 |
| D. C. | 28 | 20 | 29 | 27 | 25 | North Dakota | 2 | 1 | 1 | 1 | 2 |
| Delaware | 23 | 18 | 22 | 19 | 20 | Ohio | 132 | 127 | 125 | 138 | 144 |
| Florida | 232 | 250 | 303 | 267 | 276 | Oklahoma | 15 | 13 | 13 | 17 | 14 |
| Georgia | 35 | 46 | 53 | 56 | 52 | Oregon | 8 | 20 | 20 | 21 | 27 |
| Guam | 0 | 7 | 4 | 3 | 1 | Pennsylvania | 308 | 325 | 309 | 305 | 294 |
| Hawaii | 36 | 41 | 34 | 32 | 28 | Puerto Rico | 70 | 48 | 47 | 41 | 42 |
| Idaho | 3 | 4 | 4 | 7 | 6 | Rhode Island | 260 | 214 | 184 | 181 | 183 |
| Illinois | 150 | 184 | 248 | 249 | 226 | South Carolina | 11 | 6 | 5 | 7 | 4 |
| Indiana | 25 | 21 | 29 | 29 | 27 | South Dakota | 1 | 1 | 1 | 1 | 1 |
| Iowa | 8 | 11 | 17 | 19 | 17 | Tennessee | 16 | 9 | 15 | 13 | 13 |
| Kansas | 14 | 12 | 28 | 26 | 25 | Texas | 122 | 110 | 131 | 136 | 134 |
| Kentucky | 11 | 5 | 15 | 17 | 16 | Utah | 4 | 10 | 4 | 6 | 8 |
| Louisiana | 38 | 15 | 22 | 27 | 24 | Vermont | 47 | 49 | 52 | 49 | 49 |
| Maine | 128 | 87 | 108 | 118 | 111 | Virgin Islands | 6 | 5 | 1 | 2 | 3 |
| Maryland | 184 | 149 | 255 | 264 | 243 | Virginia | 68 | 83 | 76 | 75 | 82 |
| Massachusetts | 3,135 | 2,612 | 2,401 | 2,453 | 2,435 | Washington | 20 | 42 | 63 | 51 | 52 |
| Michigan | 82 | 67 | 71 | 79 | 76 | West Virginia | 9 | 5 | 2 | 4 | 3 |
| Minnesota | 77 | 71 | 110 | 124 | 128 | Wisconsin | 53 | 56 | 50 | 55 | 55 |
| Mississippi | 4 | 3 | 2 | 4 | 3 | Wyoming | 2 | 1 | 1 | 2 | 1 |
| Missouri | 49 | 50 | 54 | 60 | 61 | International | 227 | 314 | 208 | 187 | 139 |
| Montana | 6 | 1 | 4 | 4 | 10 | Total | 8,586 | 8,896 | 8,930 | 9,000 | 8,916 |

Source: Student Services

Undergraduate Majors*

By School

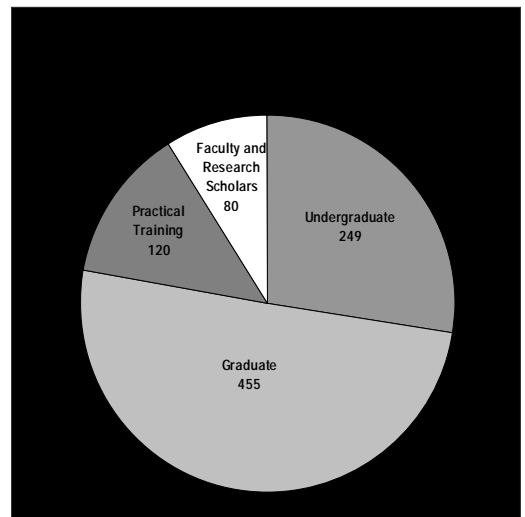
| | 1993 | 1994 | 1995 | 1996 | 1997 | 1998 | 1999 | 2000 | 2001 | 2002 |
|----------------------------|-------------|-------------|-------------|-------------|-------------|-------------|-------------|-------------|-------------|-------------|
| Arts & Sciences | | | | | | | | | | |
| ArtHistory | 38 | 43 | 38 | 37 | 38 | 36 | 34 | 32 | 45 | 42 |
| Biochemistry | 94 | 108 | 111 | 115 | 117 | 97 | 84 | 83 | 82 | 95 |
| Biology | 618 | 671 | 752 | 734 | 665 | 543 | 539 | 481 | 443 | 465 |
| Chemistry | 94 | 90 | 100 | 89 | 84 | 90 | 94 | 84 | 89 | 102 |
| Classics | 17 | 20 | 20 | 20 | 24 | 19 | 15 | 11 | 21 | 17 |
| Communication | 480 | 533 | 522 | 499 | 542 | 624 | 734 | 865 | 945 | 963 |
| Computer Science | 77 | 82 | 97 | 118 | 133 | 181 | 202 | 200 | 189 | 139 |
| Economics | 332 | 345 | 356 | 364 | 404 | 430 | 402 | 382 | 374 | 398 |
| English | 955 | 925 | 927 | 935 | 931 | 868 | 906 | 863 | 845 | 770 |
| Film Studies | - | - | - | - | - | - | - | 10 | 32 | 46 |
| Geology/Geophysics | 55 | 87 | 82 | 80 | 736 | 66 | 58 | 52 | 42 | 30 |
| German | 14 | 13 | 9 | 6 | 148 | 8 | 11 | 10 | 3 | 7 |
| History | 400 | 398 | 411 | 379 | 392 | 410 | 431 | 451 | 465 | 530 |
| Independent | 17 | 12 | 4 | 2 | 1 | 3 | 2 | 5 | 3 | 1 |
| International Studies | - | - | - | 40 | 67 | 64 | 56 | 45 | 31 | 32 |
| Mathematics | 166 | 178 | 176 | 190 | 168 | 123 | 148 | 135 | 134 | 194 |
| Music | 26 | 26 | 21 | 19 | 23 | 26 | 23 | 22 | 29 | 32 |
| Philosophy | 181 | 182 | 198 | 178 | 158 | 166 | 193 | 211 | 230 | 261 |
| Physics | 33 | 29 | 28 | 33 | 18 | 29 | 33 | 36 | 34 | 46 |
| Political Science | 773 | 781 | 747 | 700 | 671 | 618 | 649 | 626 | 646 | 669 |
| Psychology | 650 | 715 | 743 | 736 | 694 | 703 | 764 | 684 | 660 | 617 |
| Total | 4416 | 4467 | 4364 | 4183 | 4063 | 3506 | 3422 | 3046 | 2994 | 2504 |

Undergraduate Majors with Largest Ten-Year Increase By Major

| | Number of Majors | | Percent Increase |
|--|------------------|------|------------------|
| | 1993 | 2002 | |
| Theology (A&S) | 20 | 137 | 585% |
| Film Studies (A&S) ¹ | - | 46 | 360% |
| Theater Arts (A&S) | 35 | 91 | 160% |
| Information Systems (CSOM) | 53 | 128 | 142% |
| Communication (A&S) | 480 | 963 | 101% |
| Computer Science (A&S) | 77 | 139 | 81% |
| Studio Art (A&S) | 23 | 41 | 78% |
| Accounting/Info Tech (CSOM) ² | | | |

**International Student and Scholar Statistics
By Gender and Program, 2001 - 2002**

| Program | Men | Women | Total |
|-------------------------------|-----|-------|-------|
| Undergraduate | 130 | 119 | 249 |
| Graduate | 265 | 190 | 455 |
| Practical Training* | 61 | 59 | 120 |
| Faculty and Research Scholars | 52 | 28 | 80 |
| Total | | | |



Lebanon

1

5

6

Undergraduate and Graduate Degrees Conferred*

By Degree and Gender

| | 1998-99 | | | 1999-00 | | | 2000-01 | | | 2001-2002 | | |
|--|--------------|--------------|--------------|--------------|--------------|--------------|--------------|--------------|--------------|--------------|--------------|--------------|
| | Men | Women | Total | Men | Women | Total | Men | Women | Total | Men | Women | Total |
| Undergraduate | | | | | | | | | | | | |
| Arts & Sciences | | | | | | | | | | | | |
| A.B. | 487 | 527 | 1,014 | 583 | 626 | 1,209 | 594 | 652 | 1,246 | 538 | 690 | 1,228 |
| B.S. | 73 | 105 | 178 | 96 | 75 | 171 | 80 | 80 | 160 | 76 | 81 | 157 |
| Total Arts & Sciences | 560 | 632 | 1,192 | 679 | 701 | 1,380 | 674 | 732 | 1,406 | 614 | 771 | 1,385 |
| Education - A.B. | 28 | 168 | 196 | 26 | 196 | 222 | 20 | 184 | 204 | 27 | 171 | 198 |
| Management - B.S. | 352 | 232 | 584 | 381 | 276 | 657 | 376 | 206 | 582 | 352 | 215 | 567 |
| Nursing - B.S. | 3 | 59 | 62 | 2 | 58 | 60 | 1 | 46 | 47 | 2 | 62 | 64 |
| Subtotal Undergraduate Day Degrees Conferred | 943 | 1,091 | 2,034 | 1,088 | 1,231 | 2,319 | 1,071 | 1,168 | 2,239 | 995 | 1,219 | 2,214 |
| Advancing Studies - A.B. | 39 | 71 | 110 | 43 | 54 | 97 | 47 | 50 | 97 | 56 | 41 | 97 |
| Total Undergraduate Degrees Conferred | 982 | 1,162 | 2,144 | 1,131 | 1,285 | 2,416 | 1,118 | 1,218 | 2,336 | 1,051 | 1,260 | 2,311 |
| Graduate | | | | | | | | | | | | |
| Ph.D. | 51 | 65 | 116 | 53 | 63 | 116 | 40 | 69 | 109 | 55 | 65 | 120 |
| M.A. | 80 | 183 | 263 | 65 | 173 | 238 | 93 | 201 | 294 | 94 | 168 | 262 |
| M.S. | 107 | 96 | 203 | 108 | 115 | 223 | 93 | 112 | 205 | 97 | 85 | 182 |
| M.Ed. | 43 | 149 | 192 | 39 | 191 | 230 | 52 | 177 | 229 | 21 | 173 | 194 |
| M.A.T. | - | 5 | 5 | 2 | 1 | 3 | 1 | 4 | 5 | 1 | 3 | 4 |
| M.S.W. | 16 | 184 | 200 | 27 | 156 | 183 | 27 | 143 | 170 | 20 | 132 | 152 |
| M.S.T. | - | 5 | 5 | 3 | 2 | 5 | 1 | 1 | 2 | - | 3 | 3 |
| M.B.A. | 105 | 58 | 163 | 178 | 90 | 268 | 155 | 99 | 254 | 193 | 97 | 290 |
| C.A.E.S. | 1 | 6 | 7 | 2 | 10 | 12 | 3 | 9 | 12 | - | 13 | 13 |
| Total Graduate Degrees Conferred | 403 | 751 | 1,154 | 477 | 801 | 1,278 | 465 | 815 | 1,280 | 481 | 739 | 1,220 |
| Professional | | | | | | | | | | | | |
| J.D. | 136 | 129 | 265 | 127 | 173 | 300 | 130 | 132 | 262 | 150 | 118 | 268 |
| Total Graduate and Professional Degrees Conferred | 539 | 880 | 1,419 | 604 | 974 | 1,578 | 595 | 947 | 1,542 | 631 | 857 | 1,488 |
| Total Degrees Conferred | 1,521 | 2,042 | 3,563 | 1,735 | 2,259 | 3,994 | 1,713 | 2,165 | 3,878 | 1,682 | 2,117 | 3,799 |

* August, December, and May graduations combined.

** Beginning in 1997-98, Boston College changed the titles of the doctoral degrees in social work and education to doctor of philosophy.

Degrees in these fields are included in the Ph.D. counts above.

Source: Student Services

Undergraduate Degrees Conferred*

By Degree and Number of Majors

| | 1997-98 | 1998-99 | 1999-00 | 2000-01 | 2001-02 |
|-------------------|---------|---------|---------|---------|---------|
| Arts and Sciences | | | | | |
| A.B. | | | | | |
| Single Major | 954 | 832 | 971 | 1,061 | 1,032 |
| Double Major | 216 | 179 | 237 | 184 | 192 |
| Triple Major | - | - | 1 | 1 | 4 |
| | 1,170 | 1,011 | 1,209 | 1,246 | 1,228 |
| B.S. | | | | | |
| Single Major | 180 | 167 | 149 | 149 | 142 |
| Double Major | 15 | 11 | 22 | 11 | 15 |
| Triple Major | - | - | - | - | - |

Undergraduate Degrees Conferred By Major*

| | 1997-98 | 1998-99 | 1999-00 | 2000-01 | 2001-02 |
|---|---------|---------|---------|---------|---------|
| Accounting | 127 | 149 | 103 | 77 | 66 |
| Art History | 7 | 15 | 14 | 7 | 10 |
| Biochemistry | 28 | 36 | 25 | 15 | 21 |
| Biology | 132 | 119 | 96 | 109 | 88 |
| Chemistry | 13 | 17 | 24 | 18 | 18 |
| Child in Society | - | 2 | 4 | 4 | 5 |
| Classics | 5 | 3 | 4 | 1 | 4 |
| Communication | 156 | 141 | 180 | 215 | 227 |
| Computer Science | 39 | 32 | 60 | 54 | 58 |
| Early Childhood Education | 12 | 21 | 12 | 11 | 13 |
| Economics | 118 | 109 | 170 | 133 | 147 |
| Elementary Education | 56 | 43 | 49 | 47 | 64 |
| Elementary Education & Moderate Special Needs | 43 | 30 | 42 | 30 | 7 |
| English | 223 | 209 | 203 | 215 | 211 |
| Environmental Geosciences | 13 | 16 | 9 | 10 | 19 |
| Film Studies | - | - | - | 1 | 7 |
| Finance | 245 | 212 | 259 | 257 | 208 |
| French | 9 | 10 | 11 | 8 | 11 |
| Geology | 7 | 7 | 6 | - | - |
| Geophysics | - | - | 2 | 2 | 2 |
| Geology/Geophysics | - | 1 | 3 | 1 | 1 |
| German | 3 | 2 | 5 | 3 | - |

Number of Awards

| | 1997-98 | 1998-99 | 1999-00 | 2000-01 | 2001-02 |
|---|---------------|---------------|---------------|---------------|---------------|
| Type of Aid - Undergraduate | | | | | |
| University Scholarships and Grants ¹ | 3,913 | 3,902 | 3,922 | 3,842 | 3,893 |
| State Scholarships ² | 902 | 894 | 937 | 947 | 1,010 |
| Pell Grants ³ | 1,143 | 1,104 | 1,068 | 1,014 | 1,030 |
| Supplemental Educational Opportunity Grants | 1,143 | 1,085 | 1,121 | 1,000 | 1,003 |
| Work-Study | 3,135 | 3,091 | 3,145 | 2,894 | 2,825 |
| Perkins Loans ⁴ | 1,853 | 1,701 | 1,716 | 1,383 | 1,551 |
| Undergraduate Total⁵ | 12,089 | 11,777 | 11,909 | 11,080 | 12,901 |
| Type of Aid - Graduate | | | | | |
| Work-Study | 534 | 658 | 830 | 696 | 694 |
| Perkins Loans ⁴ | 692 | 652 | 726 | 757 | 895 |
| Total Undergraduate and Graduate⁵ | 13,315 | 13,087 | 13,465 | 12,533 | 12,901 |

¹This statistic includes estimated regular university scholarships and grants (through the operating budget), faculty kin tuition remission, athletic grants, Jesuit Reduction, Alumni Association Scholarships, and endowed monies for scholarships.

²State scholarship funds to students from Massachusetts, Vermont, Connecticut, Pennsylvania, Rhode Island, Maine, New Hampshire; Gilbert Grants; and Herter Scholarships.

³Pell Grant eligibility is determined directly by the federal government.

⁴These loan funds (formerly called "National Direct Student Loans") are obtained by federal government contributions, Boston College contributions, and collections of previous loans awarded.

⁵This is a duplicated total since some students receive more than one type of aid.

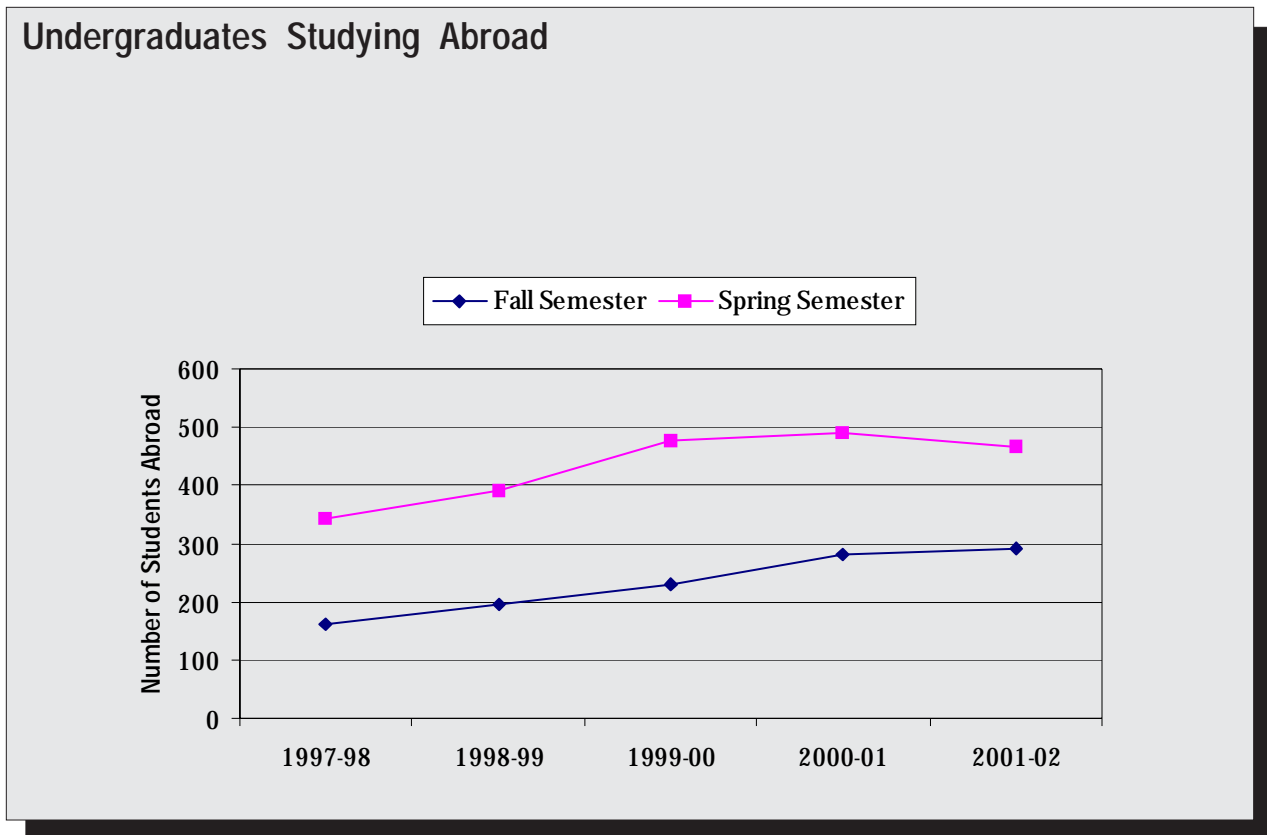
***Important Note: The above data do not include Boston College student assistance for graduate and professional students (approximately \$17.84 million in tuition remission, grants, or scholarships and \$13.35 million in stipends during 2001-2002) administered by the various schools and departments. Also excluded are the Nursing Loan Program (\$164,100 during 2001-2002), a variety of grants and scholarships from fraternal organizations and clubs (\$4,992,877 during 2001-2002), and loans processed by Student Financial Services (\$77,030,407 during 2001-2002) for undergraduate students, graduate students, or their parents.**

Source: Off Reduct(-2002), and uu2al t(8) \$17864b.d aesj/F3 0 11T002), anuring 2000 T-c0.2097 Tw[4, argraduate Total)Tjuate

Undergraduates Studying Abroad

| | Fall Semester | | | Spring Semester | | | Annual Average | | |
|-----------|---------------------|-------------------|--------------------|---------------------|-------------------|--------------------|---------------------|-------------------|--------------------|
| | University Programs | External Programs | Total All Programs | University Programs | External Programs | Total All Programs | University Programs | External Programs | Total All Programs |
| 1997-1998 | 117 | 45 | 162 | 185 | 158 | 343 | 151 | 102 | 253 |
| 1998-1999 | 156 | 41 | 197 | 276 | 115 | 391 | 216 | 78 | 294 |
| 1999-2000 | 196 | 35 | 231 | 348 | 127 | 475 | 272 | 81 | 353 |
| 2000-2001 | 230 | 50 | 280 | 347 | 144 | 491 | 289 | 97 | 386 |
| 2001-2002 | 224 | 66 | 290 | 302 | 166 | 468 | 263 | 116 | 379 |

Source: Offices of Student Services



Undergraduate Student Graduation and Retention Rates Freshman Matriculants in Fall 1995

| Rating at Time of Admission | Number of Fall Matriculants | Transfers Out in Good Standing | | Number of Graduates within Twelve Semesters | | Retention Rate* |
|--------------------------------|--------------------------------|-----------------------------------|-----------|--|------------|--------------------|
| | | Number | Percent | Number | Percent | |
| Top 5% | 154 | 6 | 4% | 139 | 90% | 94% |
| Next 20% | 739 | 45 | 6% | 648 | 88% | 94% |
| Remaining 75% | 1,232 | 43 | 3% | 1,059 | 86% | 89% |
| Total | 2,125 | 94 | 4% | 1,846 | 87% | 91% |

* "Retention Rate" is the "graduation rate" plus the "transfer out rate" of students to another college.

Source: Office of Enrollment Management Research

Long-Term Career Plans Class of 2001

| Career Field | Rank | Percent |
|--|----------|-----------------|
| Law | 1 | 12.7% |
| All Education | 2 | 12.5% |
| Business owner, proprietor, entrepreneur | 3 | 10.7% |
| Finance | 4 | 7.8% |
| Medical, health care (including physician) | 5 | 7.5% |
| Advertising, public relations | 6 | 5.9% |
| Arts/entertainment | 7 | 3.9% |
| Management | 8 | 2.8% |
| Social science or services | 9 | 2.8% |
| Government, politics, public policy | 108(1 Tw | (Undergra.26Rch |

ALUMNI &
DEVELOPMENT

PHOTO

Boston College Alumni Clubs

Arizona

Phoenix

California

Los Angeles

Northern California

Orange County

San Diego

Colorado

Denver

Connecticut

Fairfield

Hartford

District of Columbia

Washington

England

London

Florida

Miami

Naples

Orlando

Palm Beach

Sarasota

Tampa Bay

Greece

Athens

Illinois

Chicago

Indiana

Indianapolis

Maine

Portland

Maryland

Baltimore

Massachusetts

Boston

Cape Cod

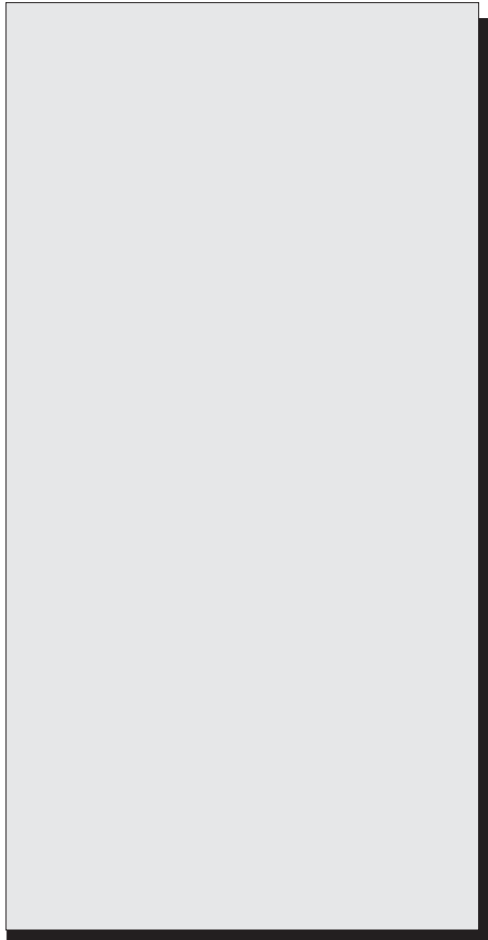
Western Massachusetts

Worcester

Minnesota

Minneapolis

Missouri



Living Alumni By Primary School and Class, Fall 2002

| Class | A&S | Ed. | Mgt. | Nursing | Adv. Studies | Newton College | Grad. A&S | Grad. Mgt. | Grad** Ed. | Grad** Nursing | Grad Adv. Studies | Social Work | Law | Weston Theo. | Hon. Dgrs. | EX* Alum | Total |
|-------|-----|-----|------|---------|--------------|----------------|-----------|------------|------------|----------------|-------------------|-------------|-----|--------------|------------|----------|-------|
| 1920 | 1 | - | - | - | - | - | - | - | - | - | - | - | - | - | - | - | 1 |
| 1921 | 1 | - | - | - | - | - | - | - | - | - | - | - | - | - | - | - | 1 |
| 1922 | - | - | - | - | - | - | - | - | - | - | - | - | - | - | - | - | 0 |
| 1923 | - | - | - | - | - | - | - | - | - | - | - | - | - | - | - | 2 | 2 |
| 1924 | 1 | - | - | - | - | - | - | - | - | - | - | - | - | - | - | - | 1 |
| 1925 | 1 | - | - | - | - | - | - | - | - | - | - | - | - | - | - | - | 1 |
| 1926 | 1 | - | - | - | - | - | - | - | - | - | - | - | - | 2 | - | 1 | 4 |
| 1927 | 3 | - | - | - | - | - | 3 | - | - | - | - | - | - | 3 | - | - | 9 |
| 1928 | 7 | - | - | - | - | - | - | - | - | - | - | - | - | 2 | - | 1 | 10 |
| 1929 | 8 | - | - | - | - | - | 1 | - | - | - | - | - | - | - | - | 4 | 13 |
| 1930 | 10 | - | - | - | - | - | 5 | - | - | - | - | - | - | 1 | - | 4 | 20 |
| 1931 | 18 | - | - | - | - | - | 2 | - | - | - | - | - | - | 1 | - | 6 | 27 |
| 1932 | 15 | - | - | - | 1 | - | 4 | - | - | - | - | - | - | 2 | - | 8 | 30 |
| 1933 | 30 | - | - | - | 1 | - | 6 | - | - | - | - | - | - | 2 | - | 3 | 42 |
| 1934 | 40 | - | - | - | 5 | - | 5 | - | - | - | - | - | 3 | 2 | - | 11 | 66 |
| 1935 | 42 | - | - | - | 9 | - | 11 | - | - | - | - | - | 6 | 3 | - | 8 | 79 |
| 1936 | 45 | - | - | - | 9 | - | 6 | - | - | - | - | - | - | 1 | 1 | 5 | 67 |
| 1937 | 62 | - | - | - | 7 | - | 6 | - | - | - | - | - | 10 | 1 | 1 | 11 | 98 |
| 1938 | 59 | - | - | - | 10 | - | 6 | - | - | - | - | 5 | 6 | - | - | 11 | 97 |
| 1939 | 96 | - | - | - | 8 | - | 10 | - | - | - | - | 4 | 11 | 1 | - | 22 | 152 |
| 1940 | 105 | - | - | - | 5 | - | 7 | - | - | - | - | 6 | 5 | 1 | - | 10 | 139 |
| 1941 | 87 | - | - | - | 15 | - | 10 | - | - | - | - | 5 | 8 | 1 | - | 6 | 132 |
| 1942 | 101 | - | 17 | - | 12 | - | 11 | - | - | - | - | 5 | 1 | 1 | - | 17 | 165 |
| 1943 | 108 | 1 | 26 | - | 16 | - | 6 | - | - | - | - | 7 | 7 | - | - | 23 | 194 |
| 1944 | 87 | - | 31 | - | 8 | - | 2 | - | - | - | - | 4 | 4 | 1 | - | 26 | 163 |
| 1945 | 76 | - | 17 | - | 8 | - | 3 | - | - | - | - | 6 | 2 | 1 | - | 90 | 203 |
| 1946 | 11 | - | 0 | - | 13 | - | 11 | - | - | - | - | 8 | 8 | - | - | 26 | 77 |
| 1947 | 75 | - | 14 | - | 7 | - | 16 | - | - | - | - | 19 | 10 | 4 | - | 27 | 172 |
| 1948 | 108 | - | 47 | - | 12 | - | 20 | - | - | - | - | 18 | 20 | 2 | - | 2 | 229 |
| 1949 | 265 | - | 59 | 16 | 27 | - | 31 | - | - | - | - | 18 | 35 | 1 | - | 10 | 462 |
| 1950 | 588 | - | 210 | 25 | 16 | 24 | 45 | - | - | - | - | 20 | 51 | 7 | - | 21 | 1,007 |
| 1951 | 573 | - | 247 | 28 | 40 | 26 | 56 | - | - | - | - | 17 | 63 | 4 | 1 | 36 | 1,091 |
| 1952 | 370 | - | 235 | 55 | 38 | 26 | 42 | - | - | - | - | 19 | 52 | 1 | - | 26 | 864 |
| 1953 | 334 | - | 205 | 66 | 40 | 34 | 82 | - | - | - | - | 25 | 41 | 1 | 5 | 24 | 857 |
| 1954 | 272 | - | 188 | 86 | 46 | 19 | 102 | - | - | - | - | 23 | 41 | 2 | 4 | 63 | 846 |
| 1955 | 244 | - | 178 | 107 | 57 | 34 | 90 | - | - | - | - | 20 | 34 | 4 | 2 | 21 | 791 |
| 1956 | 266 | 124 | 243 | 100 | 58 | 34 | 86 | - | - | - | - | 23 | 47 | 6 | 4 | 54 | 1,045 |
| 1957 | 282 | 91 | 224 | 108 | 48 | 47 | 84 | - | - | - | - | 22 | 48 | 4 | 3 | 55 | 1,016 |
| 1958 | 327 | 122 | 291 | 148 | 56 | 53 | 109 | - | - | - | - | 19 | 48 | 3 | 6 | 84 | 1,266 |
| 1959 | 336 | 109 | 309 | 137 | 64 | 72 | 97 | - | - | - | - | 24 | 58 | 11 | 1 | 77 | 1,295 |
| 1960 | 289 | 125 | 311 | 190 | 109 | 94 | 161 | 1 | - | - | - | 28 | 53 | 16 | 3 | 29 | 1,409 |
| 1961 | 260 | 81 | 263 | 147 | 61 | 99 | 135 | 6 | - | - | - | 31 | 69 | 33 | 2 | 25 | 1,212 |
| 1962 | 303 | 123 | 226 | 168 | 80 | 120 | 86 | 18 | - | - | - | 36 | 78 | 22 | 4 | 40 | 1,304 |
| 1963 | 452 | 164 | 312 | 157 | 54 | 138 | 228 | 27 | - | - | - | 28 | 70 | 24 | 2 | 35 | 1,691 |
| 1964 | 452 | 177 | 329 | 125 | 70 | 180 | 196 | 22 | - | - | - | 43 | 76 | 28 | 4 | 47 | 1,749 |

Individual Donors*
By Giving Club

| Giving Club | Level of Gift | 1997-98 | 1998-99 | 1999-00 | 2000-01 | 2001-02 |
|----------------|---------------|---------|---------|---------|---------|---------|
| Gasson Society | \$10,000 + | 331 | 381 | 505 | 589 | 626 |

By Primary School and Class, 2001-2002

Adv.

| | | | | | | | | | | | | | | | | | | |
|------|------|---|-----|---|----|---|---|---|---|---|---|---|---|---|---|---|----|----|
| 1924 | 1 | - | - | - | - | - | - | - | - | - | - | - | - | - | - | - | - | 1 |
| 1925 | - | - | - | - | - | - | - | - | - | - | - | - | - | - | - | - | - | 0 |
| 1926 | - | - | - | - | - | - | - | - | - | - | - | - | - | - | - | - | - | 0 |
| 1927 | 1 | - | - | - | - | - | - | - | - | - | - | - | - | - | - | - | - | 1 |
| 1928 | 3 | - | - | - | - | - | - | - | - | - | - | - | - | - | - | - | - | 3 |
| 1929 | 1 | - | - | - | - | - | - | - | - | - | - | - | - | - | - | - | - | 1 |
| 1930 | 4 | - | - | - | - | - | - | - | - | - | - | - | - | - | - | - | - | 4 |
| 1931 | 2 | - | - | - | - | - | - | - | - | - | - | - | - | - | - | - | - | 2 |
| 1932 | 5 | - | - | - | - | - | - | - | - | - | - | - | - | - | - | - | 1 | 6 |
| 1933 | 4 | - | - | - | - | - | - | - | - | - | - | - | - | - | - | - | 1 | 5 |
| 1934 | 12 | - | - | - | 1 | - | - | - | - | - | - | - | - | - | - | - | 3 | 16 |
| 1935 | 16 | - | - | - | - | - | - | - | - | - | - | - | - | - | - | - | - | 16 |
| 1936 | 16 | - | - | - | - | - | - | - | - | - | - | - | - | - | - | - | - | 16 |
| 1937 | 17 | - | - | - | 1 | - | 1 | - | - | - | - | - | 2 | - | - | - | 4 | 25 |
| 1938 | 19 | - | - | - | - | - | - | - | - | - | - | - | 1 | 1 | - | - | 1 | 22 |
| 1939 | 41 | - | - | - | 1 | - | 1 | - | - | - | - | - | 1 | 4 | - | - | 5 | 53 |
| 1940 | 44 | - | - | - | - | - | 1 | - | - | - | - | - | 2 | 3 | - | - | 4 | 54 |
| 1941 | 32 | - | - | - | 1 | - | 2 | - | - | - | - | - | 1 | 3 | - | - | 1 | 40 |
| 1942 | 36 | - | 6 | - | 3 | - | - | - | - | - | - | - | 1 | 1 | - | - | 3 | 50 |
| 1943 | 40 | 1 | 14 | - | 1 | - | 1 | - | - | - | - | - | 2 | 2 | - | - | 7 | 68 |
| 1944 | 35 | - | 15 | - | 1 | - | - | - | - | - | - | - | 1 | - | - | - | 7 | 59 |
| 1945 | 41 | - | 4 | - | - | - | - | - | - | - | - | - | - | - | - | - | 13 | 58 |
| 1946 | 2 | - | - | - | - | - | 3 | - | - | - | - | - | 2 | 1 | - | - | 4 | 12 |
| 1947 | 16 | - | 4 | - | 2 | - | 3 | - | - | - | - | - | 4 | 4 | - | - | 8 | 41 |
| 1948 | 40 | - | 16 | - | 4 | - | 1 | - | - | - | - | - | 4 | 5 | - | - | - | 70 |
| 1949 | 94 | - | 21 | - | -1 | - | - | - | - | - | - | - | - | - | - | - | - | - |
| 94 | 1 | - | - | 4 | 12 | - | - | - | - | - | - | - | - | - | - | - | - | - |
| 1947 | 1-94 | 1 | 481 | - | - | - | - | - | - | - | - | - | - | - | - | - | - | - |
| 56 | - | - | - | - | - | - | - | - | - | - | - | - | - | - | - | - | - | - |

-[(1947)-2556.7(1)-26.7(6)-306.7(1)-3877(-)-3817(7(-)-179.7,7(9)-26.7(4)-3006.7(1)-3mS1(-)-3069.18-7-2688t7n(6)-30

| | | | | | | | | | | | | | | | | | | |
|------|---|----|-------------------------|------|----|----|--|--------------------|---|----|---|----|----|---|---|---|-----|---|
| 1969 | 156 | 62 | 106 | 33 | 18 | 29 | 57 | 9 | - | - | - | 8 | 52 | 1 | - | 4 | 535 | |
| 1970 | 151 | 66 | 99 | 46 | 19 | 33 | 46 | 12 | - | - | - | 7 | 32 | - | - | 1 | 512 | |
| 1971 | 148 | 84 | 120 | 47 | 10 | 24 | 71 | 13 | - | - | - | 10 | 48 | - | - | 1 | 576 | |
| 1972 | 174 | 87 | 97 | 44 | 13 | 26 | 89 | 4 | - | - | - | 11 | 59 | - | - | 3 | 607 | |
| 1973 | 193 | 61 | 90 | 47 | 15 | 32 | 56 | 15 | - | - | - | 12 | 72 | - | - | 4 | 597 | |
| 1974 | 274 | 71 | 100 | 38 | 24 | 23 | 63 | 10 | - | - | - | 8 | 73 | - | - | 7 | 691 | |
| 1975 | 240 | 77 | 87 | 58 | 19 | 35 | 64 | 12 | - | - | - | 16 | 68 | - | - | 1 | 677 | |
| 1976 | 303 | 83 | 149 | 63 | 12 | - | 59 | 21 | - | - | - | 13 | 68 | - | - | 1 | 772 | |
| 1977 | 279 | 61 | 131 | 45 | 25 | - | 52 | 12 | - | - | - | 9 | 84 | - | - | 2 | 700 | |
| 1978 | 297 | 55 | 147 | 42 | 15 | - | 56 | 18 | - | - | - | 9 | 67 | - | - | 1 | 707 | |
| 1979 | 294 | 44 | 170 | 53 | 15 | - | 53 | 27 | - | - | - | 14 | 82 | - | - | - | 752 | |
| 1980 | 302 | 42 | 146 | 66 | 21 | - | 71 | 27 | - | - | - | 10 | 57 | - | - | - | 742 | |
| 1981 | 314 | 46 | 174 | 62 | 21 | - | 66 | 25 | - | - | - | 7 | 82 | - | - | 1 | 798 | |
| 1982 | 290 | 35 | 167 | 46 | 28 | - | 65 | 21 | - | - | - | 5 | 66 | - | - | 1 | 724 | |
| 1983 | 308 | 34 | 149 | 46 | 25 | - | 45 | 20 | - | - | - | 14 | 58 | - | - | - | 699 | |
| 1984 | 288 | 27 | 160 | 26 | 25 | - | 40 | 22 | - | - | - | 8 | 71 | - | - | 1 | 668 | |
| 1985 | 259 | 32 | 143-6.7(8)-2166.7(3)cN6 | - | - | - | 442589.7(4)-26.7(0)-2166.7(2)-26.7(2)-3787(-)957(4)]TJT* [(1983)t1n6c(1)-6.79.7(-)7(7)-3306y97 | - | - | - | - | - | - | - | - | - | - | - |
| 1974 | -3274Sm8(0)-3786.7(2)Se9ld3ket:592166.ek64e6032 | - | - | - | - | - | 3786.7(-3cw8Sm8(0)-37866378966.7(2)-2646.7(-417a5Sst)-69 | 190-3429.7(-)-3519 | - | - | - | - | - | - | - | - | - | - |
| 1981 | 314 | 2 | 1- | 1751 | 71 | 27 | 4- | - | 5 | 67 | - | - | - | - | - | - | - | |

PHOTO

| | | | | |
|-----------------------------------|-------------------------------|---|------------|---------|
| Alumni House | 885 Centre Street | Administrative | 1974 | 15,638 |
| Alumni Stadium | 2604 Beacon Street | Sports | 1957 | 464,347 |
| Bapst Library | Middle Campus | Library | 1928 | 69,623 |
| Barat House | 885 Centre Street | Jesuit Residence & Administrative | 1974 | 25,392 |
| Bea House ² | 176 Commonwealth Avenue | Jesuit Residence | 1965 | 4,685 |
| Botolph House | 18 Old Colony Road | Administrative | 1967 | 7,136 |
| Bourneuf House | 84 College Road | Administrative | 1985 | 4,460 |
| Thea Bowman AHANA Center | 72 College Road | Administrative | 1970 | 3,528 |
| Brock House | 78 College Road | Administrative | 1972 | 4,146 |
| Campion Hall | Middle Campus | Academic & Administrative | 1955 | 112,491 |
| Canisius House ² | 67 Lee Road | Jesuit Residence | 1966 | 3,761 |
| Carney Hall | Middle Campus | Academic & Administrative | 1962 | 101,059 |
| Cheverus Hall | 127 Hammond Street | Student Residence | 1960 | 32,102 |
| Claver Hall | 40 Tudor Road | Student Residence | 1955 | 12,980 |
| Connolly Carriage House | 300 Hammond Street | Academic | 1975 | |

Buildings Related to Boston College Operations Location and Primary Use, Spring 2002 (Continued)

| Name | Location | Primary Use | Date Constructed or Acquired | Gross Square Footage |
|---|---------------------------|-------------------------------------|------------------------------|----------------------|
| Merkert Trailer | Middle Campus | Academic | 1998 | 3,008 |
| Mill Street Cottage | 29 Mill Street | Residence | 1974 | 2,879 |
| Modular Apartments | Lower Campus | Student Residence | 1970 | 104,100 |
| Murray House | 292 Hammond Street | Commuter Center | 1967 | 8,490 |
| Murray Carriage House | 292 Hammond Street | Academic | 1967 | 2,618 |
| O'Connell House | 185 Hammond Street | Student Union | 1938 | 32,007 |
| Thomas P. O'Neill, Jr. Library | Middle Campus | Central Research Library | 1984 | 206,910 |
| Parking Garage | 2599 Beacon Street | General Parking Facility | 1979 | 302,023 |
| Parking Garage (New) | 40 St. Thomas More Road | General Parking Facility | 1994 | 328,972 |
| Quonset Hut | 885 Centre Street | Gymnasium | 1974 | 5,964 |
| Rahner House | 96 College Road | Administrative | 1952 | 2,799 |
| Ricci House | 30 Quincy Road | Jesuit Residence | 1999 | 4,534 |
| Roberts House & Garage ³ | 246 Beacon Street | Jesuit Residence | 1989 | 8,583 |
| Robsham Theater Arts Center | 50 St Thomas More Road | Student Services & Academic | 1981 | 31,614 |
| Roncalli Hall | 200 Hammond Street | Student Residence | 1965 | 40,674 |
| Rubenstein Hall | 90 Commonwealth Avenue | Student Residence | 1973 | 123,739 |
| Service Building | Middle Campus | Academic & Administrative | 1948 | 33,718 |
| Shaw House | 372 Beacon Street | Student Residence | 1962 | 9,494 |
| Commander Shea Field | 2605 Beacon Street | Baseball/Soccer Field | 1960 | |
| Southwell Hall | 38 Commonwealth Avenue | Administrative | 1937 | 12,338 |
| St. Ignatius Maintenance Building | Middle Campus | Administrative | 1993 | 2,372 |
| St. Mary's Hall ² | Middle Campus | Jesuit Residence | 1917 | 135,721 |
| St. Thomas More Hall | 2150 Commonwealth Avenue | Administrative | 1955 | 64,584 |
| Stuart House & the James W. Smith Wing | 885 Centre Street | Academic & Administrative | 1974 | 104,884 |
| Trinity Chapel (Newton) | 885 Centre Street | Chapel | 1974 | 20,578 |
| Vanderslice Hall | 70 St. Thomas More Road | Student Residence | 1993 | 119,492 |
| Vouté Hall | 110 Commonwealth Avenue | Student Residence | 1988 | 87,189 |
| Michael P. Walsh Hall | 150 St. Thomas More Road | Student Residence & Dining Facility | 1980 | 205,805 |
| Waul House | 256 Hammond Street | Administrative | 2000 | 16,407 |
| Welch Hall | 182 Hammond Street | Student Residence | 1965 | 40,724 |
| Weston Observatory | Weston, MA | Research & Administrative | 1948 | 22,182 |
| Williams Hall | 144 Hammond Street | Student Residence | 1965 | 40,738 |
| Xavier Hall | 44 Tudor Road | Student Residence | 1955 | 12,938 |
| | 142 Beacon Street | Administrative | 1997 | 3,446 |
| | 194 Beacon Street | Academic | 1996 | 5,628 |
| | 350 Beacon Street | Residence | 2001 | 3,329 |
| | 2 Boston Road Property | TBD | 2000 | 16,591 |
| | 11 Chestnut Hill Road | Residence | 2000 | 5,334 |
| | 36 College Road | Administrative | 1974 | 3,766 |
| | 50 College Road | Administrative | 1996 | 4,303 |
| | 66 Commonwealth Avenue | Student Residence & Administrative | 1989 | 58,779 |
| | 25 Lawrence Avenue | Administrative | 1993 | 4,722 |
| | 31 Lawrence Avenue | Academic | 1979 | 5,105 |
| | 31 Lawrence Avenue Garage | Administrative | 1996 | 1,985 |
| | 55 Lee Road | Administrative | 1978 | 7,363 |
| | 66 Lee Road | Residence | 1999 | 2,510 |
| | 14 Mayflower Road | Administrative | 1998 | 5,245 |
| | 40 Old Colony Road | Residence | 2001 | 6,400 |
| | 24 Quincy Road | Academic | 1998 | 4,317 |
| | 22 Stone Avenue | Administrative | 1999 | 4,632 |
| | 42 St. Stephens Green | Administrative | 2000 | 6,610 |
| | 43 St. Stephens Green | Administrative | 2000 | 6,473 |
| | 90 St. Thomas More Road | Student Residence | 1993 | 110,487 |
| Total Gross Square Footage⁴ | | | | 5,858,370 |

Facility Capacities

Fall 2002

| Facility & Location* | Lecture/Event Seating | Dinner Seating | Buffet Seating | Reception/ Standing |
|--|-----------------------|----------------|----------------|---------------------|
| Athletics | | | | |
| Alumni Stadium | 44,500 | - | - | - |
| Conte Forum | 8,500/7,600** | - | - | - |
| Kelly Rink | - | 1,100 | 700 | 2,000 |
| Power Gymnasium | 975 | 600 | 450 | 1,000 |
| The Shea Room | 250 | 160 | 140 | 300 |
| Flynn Student Recreation Complex | 2,809 | - | - | 4,000 |
| Auditoriums | | | | |
| Cushing Hall 001 | 160 | - | - | - |
| Devlin Hall 008 | 297 | - | - | - |
| Fulton Hall 518 | 205 | - | - | - |
| Gasson Hall 305 (Fulton Debate) | 102 | - | - | - |
| Higgins 300 | 153 | - | - | - |
| Higgins 310 | 80 | - | - | - |
| McGuinn Hall 121 | 256 | - | - | - |
| Merkert Chemistry Center 127 | 150 | - | - | - |
| Robsham Theater Arts Center | 591 | - | - | - |
| Stuart Hall 315, Newton Campus | 178 | - | - | - |
| Stuart Hall 411, Newton Campus | 100 | - | - | - |
| New Academic Wing 120, Newton Campus | 125 | - | - | - |
| New Academic Wing 115a, Newton Campus*** | 150 | - | - | - |
| New Academic Wing 115b, Newton Campus*** | 150 | - | - | - |
| New Academic Wing 200, Newton Campus | 96 | - | - | - |
| New Academic Wing 400, Newton Campus | 56 | - | - | - |
| Dining Halls**** | | | | |
| Boston Room, Lower Campus Dining Facility | - | 40 | 32 | 50 |
| Eagle's Nest, McElroy Commons | - | 450 | 350 | - |
| Faculty Dining Room, McElroy Commons | - | 150 | 125 | 175 |
| Heights Room, Lower Campus Dining Facility | - | 224 | 200 | 325 |
| Main Dining Area, Lower Campus Dining Facility | - | 803 | 803 | 803 |
| McElroy Main Dining Hall, McElroy Commons | - | 900 | 700 | 1,100 |
| Newton Campus Cafeteria, Stuart House | - | 286 | 200 | - |
| Newton Room, Lower Campus Dining Facility | - | 40 | 32 | 50 |
| Stuart Snack Bar, Stuart House, Newton Campus | - | 250 | 200 | - |
| Welch Dining Hall, Lyons Hall | - | 500 | 400 | 550 |
| Houses | | | | |
| Barat House, Newton Campus | 50 | 64 | 64 | 90 |
| Haley House, 314 Hammond Street | 16 | - | - | - |
| Hovey House Library, 258 Hammond Street | 25 | - | - | - |
| O'Connell House, 185 Hammond Street | - | 250 | 200 | - |

(continued on following page)

Multi-Purpose

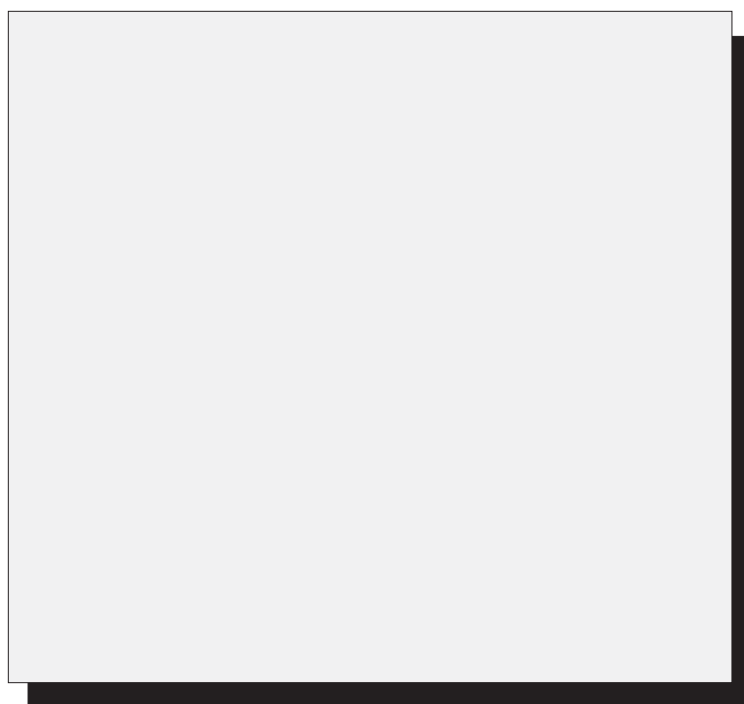
| | | | | |
|--|-----|-----|-----|-----|
| Cabaret Room, Vanderslice Hall | 150 | 115 | 100 | 400 |
| Kresge Room & Lobby, Robsham Theater Arts Center | - | - | - | 150 |

Dining Facilities

Fall 2002

| Name | Location | Capacity |
|------------------------------------|------------------------------|--------------|
| Carney's (McElroy Dining Hall) | McElroy Commons | 775 |
| Eagle's Nest Snack Bar | McElroy Commons | 446 |
| Faculty Dining Room | McElroy Commons | 146 |
| Hillside Cafe | Lower Campus Admin. Building | 150 |
| Lower Campus Dining Facility | 60 St. Thomas More Road | 945 |
| McElroy Cafe | McElroy Commons | 91 |
| Newton Campus Cafeteria | Stuart House | 290 |
| Newton Campus Snack Bar | Stuart House | 250 |
| Welch Dining Hall | Lyons Hall | 550 |
| Total Dining Hall Seating | | 3,643 |
| Boston Room | 60 St. Thomas More Road | 40 |
| Heights Room | 60 St. Thomas More Road | 250 |
| Newton Room | 60 St. Thomas More Road | 40 |
| Walsh Function Room | Walsh Hall | 150 |
| Total Function Room Seating | | 480 |
| Total Capacity | | 4,123 |

Source: Dining Service

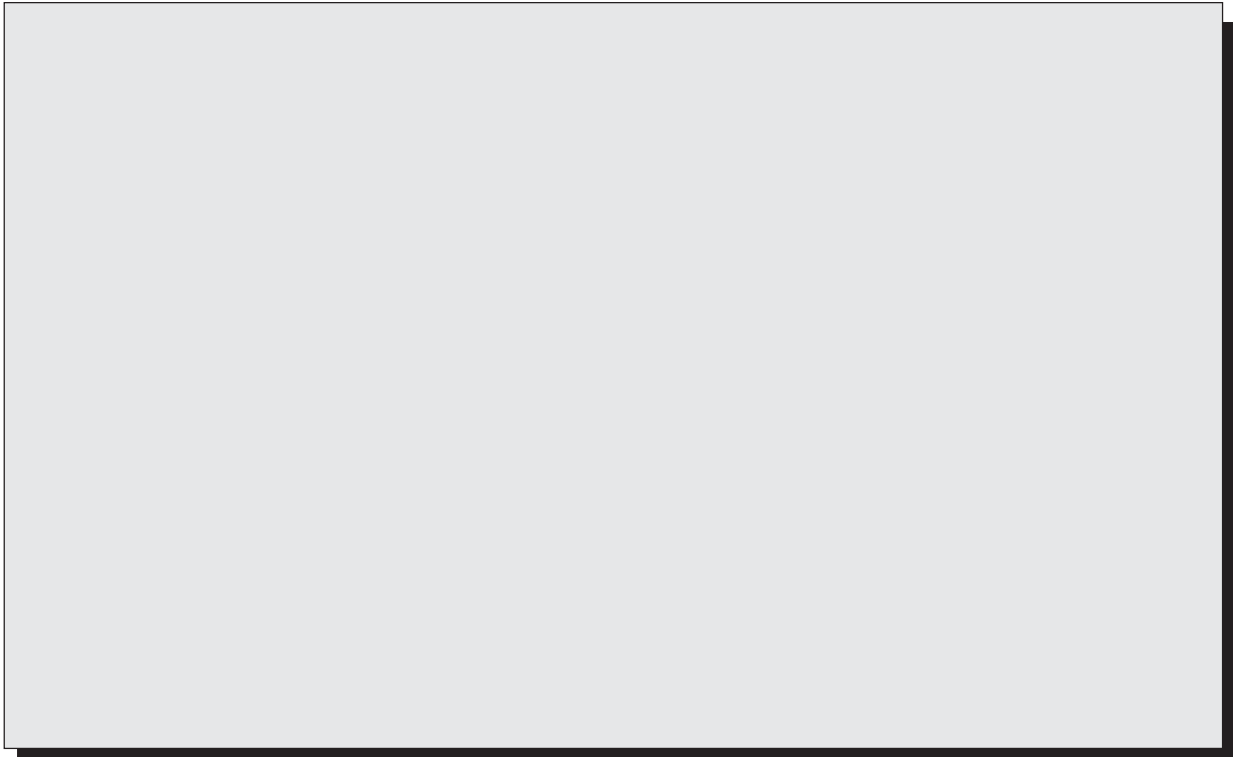


Residence Hall Capacities Fall 2002

| Residence Hall | Address | Living Units | Students | Staff* | Total |
|-----------------------------|--------------------|--------------|----------|--------|-------|
| Chestnut Hill Campus | | | | | |
| Upper Campus | | | | | |
| Cheverus Hall | 127 Hammond Street | 65 | 132 | 3 | 135 |
| Claver Hall | | | | | |

FINANCE

PHOTO

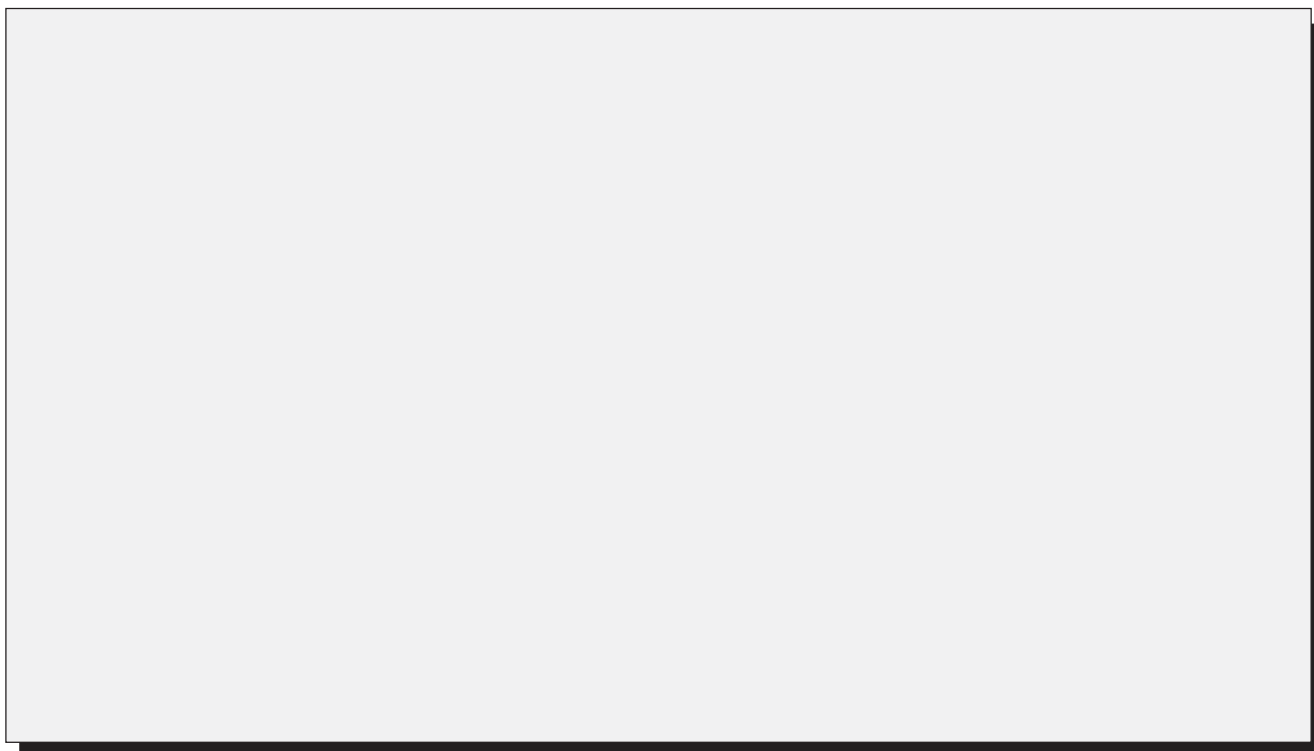


Tuition and Fees
For the Ten Years Ending May 31, 2003

| | 1994 | 1995 | 1996 | 1997 | 1998 | 1999 | 2000 | 2001 | 2002 | 2003 |
|--|-------------|-------------|-------------|-------------|-------------|-------------|-------------|-------------|-------------|-------------|
| Undergraduate Schools | | | | | | | | | | |
| Arts & Sciences, Education, Management, Nursing | \$15,570 | \$16,640 | \$17,890 | \$18,820 | 19,770 | 20,760 | 21,700 | 22,680 | 24,050 | \$25,430 |

Boston College Undergraduate Tuition Restated in 1982-84 Dollars*
Effect of Inflation and Real Growth

| Academic Year | Tuition in Absolute Dollars | Consumer Price Index** | Tuition in Constant 1982-84 Dollars |
|------------------|-----------------------------------|------------------------------|---|
| 1989-90 | \$11,720 | 126.1 | \$9,294 |



ACADEMIC RESOURCES & TECHNOLOGY

PHOTO

Expenditures for Library Materials

| Library | 1997-98 | 1998-99 | 1999-00 | 2000-01 | 2001-02 |
|-----------------------------|--------------------|--------------------|--------------------|--------------------|--------------------|
| O'Neill* | \$ 4,542,640 | \$ 4,669,956 | \$ 5,004,918 | \$ 5,254,406 | \$ 5,420,183 |
| Educational Resource Center | 61,442 | 66,876 | 66,014 | 68,968 | 68,338 |
| Bapst | 70,483 | 73,238 | 75,617 | 78,075 | 81,120 |
| Social Work | 88,838 | 89,977 | 92,053 | 95,144 | 98,493 |
| John J. Burns | 44,632 | 94,315 | 135,507 | 210,840 | 193,160 |
| Law | 855,487 | 912,927 | 934,204 | 997,441 | 1,016,247 |
| Total | \$5,663,522 | \$5,907,289 | \$6,308,312 | \$6,704,874 | \$6,877,541 |

* Includes general expenditures recorded as "University Librarian."

Source: Office of the Controller

Library Services

Quest: The Library Information System

Quest, the Libraries' Web-based integrated system provides convenient access to the Libraries' collections, digital resources, and services from www.bc.edu/quest. It offers a variety of methods for finding books, periodicals, media resources, microforms, newspapers, and electronic materials.

QUEST can easily be searched from any Web browser regardless of platform or location, 24 hours a day, seven days a week. Users can interact with the system and receive immediate feedback on the status of requests; they can place a hold, recall, or request rush processing for a new book right from their desktop. Users can also initiate and track requests for document delivery and interlibrary loan transactions, and may renew materials that are currently charged to them. The Web interface and expanded cataloging capabilities allow unprecedented access to thousands of Web accessible scholarly resources, to full text journals, and to digital collections of photographs and other material.

Digital Resources

The Boston College Libraries offer access to hundreds of electronic indexes and databases. A growing number of these databases include full text access to thousands of books and journals directly from the researcher's desktop. A complete listing of all online databases available through the Libraries can be found by selecting Online Databases on the Libraries' home page: www.bc.edu/libraries.html. The list includes groupings by subject and an alphabetical listing by title. Databases range in coverage from very general to very specific and cover a wide range of research areas in humanities, social sciences, sciences, health sciences, business law, and public affairs. Most databases can be reached directly

John J. Burns Library of Rare Books and Special Collections

The University's special collections, including the University's Archives, are housed in the magnificently appointed Honorable John J. Burns Library, located in the Bapst Library Building, north entrance. These distinguished and varied collections speak eloquently of the University's commitment to the preservation and dissemination of human knowledge. The Burns Library is home to more than 150,000 volumes, some 15,000,000 manuscripts, and important collections of architectural records, maps, art works, photographs, films, prints, artifacts, and ephemera. These materials are housed in the climate-controlled, secure environment of Burns either because of their rarity or because of their importance as part of a special collection. While treated with special care, these resources are available for use at Burns to all qualified students, faculty, and researchers. Indeed, their use is strongly encouraged, and visitors to Burns are always welcome, either simply to browse or to make use of the collections.

Though its collections cover virtually the entire spectrum of human knowledge, the Burns Library has achieved international recognition in several specific areas of research, most notably: Irish studies; British Catholic authors; Jesuitana; Fine print; Catholic liturgy and life in America, 1925-1975; Boston history; the Caribbean, especially Jamaica; Balkan studies; Nursing; and Congressional archives. It has also won acclaim for significant holdings on American detective fiction, Thomas Merton, Japanese prints, Colonial and early Republic Protestantism, and banking.

Some of the significant collections at Burns include:

- ◆ Joseph A. Grace's Early Modern English Authors Collection
- ◆ Graham Greene Library and Archive
- ◆ Bobby Hanvey Photographic Negative Archive on Northern Ireland
- ◆ Seamus Heaney Collection
- ◆ The Honorable Margaret Heckler Papers
- ◆ Irish Collection: Books, Manuscripts, Paintings, Sculpture, Photographs, Maps and Ephemera
- ◆ Irish Music Center- including the Frederick Manning Collection of John McCormack
- ◆ Jane Jacobs Collection
- ◆ Janet Wilson James Collection on Women's History
- ◆ Elizabeth Jennings Collection
- ◆ Jesuitana Collection, 1540-1773; 1814 - present
- ◆ David Jones Collection
- ◆ Rita Kelleher Collection on Nursing
- ◆ Brian and June Leeming Collection of Irish Literature
- ◆
- ◆ The Aylesford Press Collection
- ◆ Banking Archives: Hibernia Savings Bank, Union Warren, The Provident Institution for Savings, the Yankee Bank for Finance and Savings, and the Savings Banks Association of Massachusetts
- ◆ Samuel Beckett Collection
- ◆ Hilaire Belloc Collection and Archives, 1870-1953
- ◆ The Honorable Edward Boland Papers
- ◆ Bookbuilders of Boston Archives, 1938-
- ◆ British Catholic Authors
- ◆ Bruce F. Browning Boston Theater Collection
- ◆ Burns, Oates, and Washbourne Collection, 1847-1954
- ◆ The Wallace P. Carroll Papers
- ◆ The Charitable Irish of Boston Collection
- ◆ Gilbert Keith Chesterton Collection, 1874-1936
- ◆ Citywide Coordinating Council Archives, 1975-1978
- ◆ Gerald Chartres Dawe Collection
- ◆ John F. Deane Collection
- ◆ Josephine A. Dolan Collection
- ◆ Theodore Dreiser Collection
- ◆ The Reverend Robert F. Drinan, S.J. Papers
- ◆ East European Collection (Bulgarian and Romanian)
- ◆ Eire Society of Boston Archives
- ◆ Fine Print Collection
- ◆ Flann O'Brien Papers
- ◆ Eric Gill Collection
- ◆ Howard B. Gill Papers

**Student Learning and
Support Center Statistics**

Computer Network Elements

| | 1997-98 | 1999-00 | 2000-01 | 2001-02 |
|---|--------------|--------------|--------------|---------------|
| Computer Networking "Actives" | | | | |
| Number of remote campuses supported for data | 4 | 5 | 6 | 6 |
| Total number of registered TCP/IP nodes | 11,772 | 11,844 | 13,000 | 13,125 |
| Number of servers running at 100 megabytes per second | 52 | 93 | 150 | 200 |
| Number of "Switched" 10/100 ethernet ports | 1,032 | 11,300 | 12,000 | 16,950 |
| Number of "Shared" 10 megabyte ethernet ports | 13,153 | 6,900 | 6,200 | 1,250 |
| Number of "Building to Backbone" links at 10 megabytes per second | 95 | 50 | 15 | 0 |
| Number of "Building to Backbone" links at 100 megabytes per second | 2 | 51 | 13 | 10 |
| Number of "Building to Backbone" links at 1000 megabytes per second | 1 | 1 | 26 | 88 |
| Total bandwidth of Internet I link (in megabytes per second) | 4.5 | 45 | 45 | 45 |
| Total Bandwidth of Internet II | n/a | n/a | 155M | 155M |
| Total bandwidth of campus backbone | 200M | 200M | 2 Gigabit | Multi-gigabit |
| Teleconferencing locations | 7 | 10 | 10 | 10 |
| Computer Network Infrastructure | | | | |
| Investment in infrastructure (cumulative) | | | | |
| Voice, data, video, active electronics & equipment | \$30,000,000 | \$30,925,000 | \$32,000,000 | \$35,200,000 |
| Cable plant, racks, patch panels, frames, etc. | \$10,000,000 | \$10,250,000 | \$10,450,000 | \$11,495,000 |
| Network Plant | | | | |
| Total number of network rooms supported | 380 | 390 | 397 | 405 |
| Total number of information outlets supported | 80,000 | 81,000 | 81,650 | 83,000 |
| Interior fiber optic cable installed (in miles) | 6 | 7 | 7.5 | 8.5 |
| Exterior fiber optic cable installed (in miles) | 12 | 14 | 16 | 18 |
| Interior station cabling installed (in miles) | 250 | 280 | 300 | 400 |
| Exterior copper cabling installed (in miles) | 40 | 41 | 43 | 44 |
| Cable Television Plant | | | | |
| CATV Headend Rooms | 1 | 1 | 1 | 1 |
| CATV Satellite Distribution Center | 1 | 1 | 1 | 1 |
| CATV drops - active | 7,500 | 7,723 | 7,723 | 7,983 |

Source: Information Technology

Total Successful Page Deliveries by WWW.BC.EDU Web Server by Month

| | 1995-96 | 1996-97 | 1997-98 | 1998-99 | 1999-00 | 2000-01 | 2001-02 |
|--|---------|---------|---------|---------|---------|---------|---------|
|--|---------|---------|---------|---------|---------|---------|---------|

J

PHOTO

Highlights of Sponsored Activities, 2001-2002

Summary of Sponsored Project Awards, 2001-2002

| | Number of Awards | Award Total | Number of Awards | Award Total |
|---|------------------|----------------------|------------------|-------------|
| School of Education | 23 | 2,842,716 | | |
| Campus School | 8 | 2,556,934 | | |
| CSTEOP | 12 | 1,478,245 | | |
| TIMSS | 16 | 3,871,354 | | |
| Law School | 7 | 170,856 | | |
| School of Management | 7 | 549,640 | | |
| School of Nursing | 16 | 1,280,714 | | |
| Graduate School of Social Work | 13 | 667,655 | | |
| Center for Corporate Citizenship | 3 | 839,350 | | |
| Center for Child, Family & Community Partnerships | 12 | 640,702 | | |
| Center for Religion & American Public Life | 3 | 152,559 | | |
| Center for Work and Family | 1 | 33,500 | | |
| Irish Institute | 3 | 818,232 | | |
| Learning to Learn | 2 | 223,778 | | |
| Social Welfare Research Institute | 1 | 444,585 | | |
| Other | 1 | 99,278 | | |
| TOTAL | 282 | \$ 39,642,198 | | |

*Includes Weston Observatory.

Source: Office of Sponsored Programs

Sponsored Projects*

Source and Application of Funding (Thousands of Dollars)

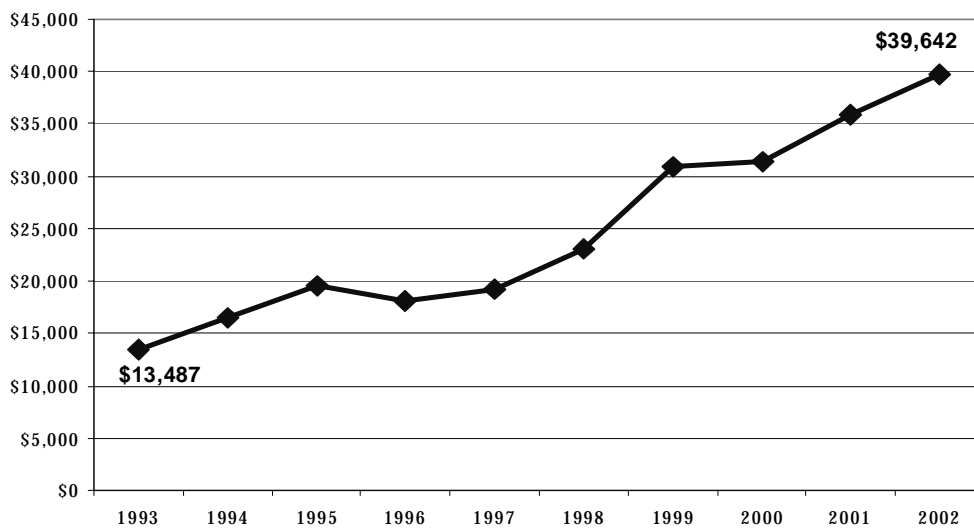
| | 1998 | 1999 | 2000 | 2001 | 2002 |
|----------------------------|-----------------|-----------------|-----------------|-----------------|-----------------|
| Source | | | | | |
| Government: | | | | | |
| Federal | \$ 20,182 | \$ 22,760 | \$ 25,449 | \$ 28,677 | \$ 31,513 |
| State | 1,415 | 1,326 | 1,908 | 1,858 | 2,060 |
| Local | 1,913 | 2,005 | 3,118 | 2,741 | 2,333 |
| Corporations & Foundations | 2,603 | 4,592 | 5,895 | 6,184 | 7,144 |
| Total | \$26,113 | \$30,683 | \$36,370 | \$39,460 | \$43,050 |
| Application | | | | | |
| Sponsored Research | \$ 14,608 | \$ 18,700 | \$ 22,860 | \$ 23,796 | \$26,296 |
| Other Sponsored Programs | 4,961 | 5,112 | 6,240 | 8,234 | 8,675 |
| Student Aid | 6,544 | 6,871 | 7,270 | 7,430 | 8,079 |
| Total | \$26,113 | \$30,683 | \$36,370 | \$39,460 | \$43,050 |

* The amounts represent actual accounted expenditures (including Pell Grants) for the referenced fiscal year.

Source: Office of the Controller

Sponsored Project Awards Received
Fiscal Year 1992-1993 through 2001-2002 (Dollars in Thousands)

Growth in Sponsored Project Awards Received
Fiscal Year 1992-1993 through 2001-2002
(Dollars in Thousands)



Note: Student aid funds managed by the Financial Aid Office are *not* included in this chart.

The dollar amount of Sponsored Project Awards at Boston College increased by 194% between 1993 and 2002.

Selected Sponsored Project Awards

Center for Retirement Research

The Center for Retirement Research at Boston College was established through a 5-year \$5.25 million grant from the Social Security Administration in 1998. The goals of the Center are to promote research on retirement issues, to transmit new findings to the policy community and the public, to help train new scholars, and to broaden access to valuable data sources. The Center is the headquarters for researchers and experts in affiliated institutions including MIT, Syracuse University, the Brookings Institution, the Urban Institute, and the National Academy of Social Insurance. The Center is structured around a research team of interdisciplinary backgrounds in actuarial science, demography, economics, economic history, finance, political science, sociology and social work, and possesses a breadth of knowledge on retirement issues and institutions virtually unmatched in the field. As the nation confronts the myriad issues surrounding how best to ensure adequate retirement income for an aging population, the Center's researchers and experts explore possible policy changes related to Social Security, private pensions, and other sources of retirement income.

Web site: <http://www.bc.edu/crr>

Center for the Study of Testing, Evaluation, and Educational Policy (CSTEED)

CSTEED is an educational research organization located in the Lynch School of Education. Since its inception in 1980, CSTEED has conducted international comparative research on educational achievement and testing, evaluation and public policy studies to improve school assessment practices. CSTEED researchers work on both small and large scales - individual schools, districts, and states - to advance educational testing practices and policies and to improve the quality and fairness of education. The Scanning Services Center (SSC) at CSTEED serves the needs of the Boston College community. It provides scanning services for departments and individuals, including scanning for course evaluations, course tests, and research surveys. CSTEED also administers national examinations, specifically the Miller Analogies Test (MATPotions, spe

ATHLETICS

PHOTO

Intercollegiate Athletic Season Highlights 2001-2002

BASEBALL

Head Coach: Pete Hughes

Record: 30-25 (15-11 BIG EAST)

With a very experienced nucleus of veterans and 16 talented freshmen, head coach Pete Hughes and the Eagles overcame several injuries to remain near the top of the BIG EAST standings the entire season. The Eagles' weekend pitching rotation - Mark Sullivan, Chris Lambert, and Kevin Shepard - combined for a 24 - 9 record. Besides qualifying for the BIG EAST Tournament, two team highlights include the Eagles sweeping then No. 21 Rutgers and defeating NCAA Tournament qualifier Florida International in a single game. Post season honors for the team included Hughes being named BIG EAST Coach of the Year, which was the second time he has earned the honor in four years. Lambert became the first player in BIG EAST history to be named Rookie and Pitcher of the Year in the same year. Jeff Mackor, Neal McCarthy, Lambert, and Brian Durkin were all named first-team ALL-BIG EAST, while Macchi and Locke earned third-team distinctions.

BASKETBALL

Head Coach, Men's: Al Skinner

Head Coach, Women's: Cathy Ingles

Men's: Record: 20-12 (8-8 BIG EAST)

Boston College finished with a 20-12 record and earned its second consecutive berth in the NCAA Tournament. Coming on the heels of the previous winter's 27th-win campaign, the Eagles posted their first back-to-back 20 win seasons since 1981-82 and 1982-83. The program also registered 47 victories in the last two years, equaling the school's record for victories in a two-season span. Troy Bell gained ALL-BIG EAST first team honors for the second consecutive season, while Ryan Sidney made his mark in the rebounding department. Sidney was the nation's top rebounder among Division I players who stood 6-2 or shorter. The program capitalized on its recent success, making numerous regional and national television appearances, including six on ESPN, four on CBS, one on ABC and one on CNN/SI.

Women's: Record: 23-8 (12-4 BIG EAST)

The Eagles put forth one of the most successful seasons in recent history with their 23-8 overall mark. Compiling the second-highest win total in program history, the Eagles qualified for their third NCAA Tournament in the last four years and were the fifth seed in the Midwest Regional, also tying the program-high for post-season seeding. In BIG EAST action, BC went 12-4 during the regular season and was seeded as the #3 team heading into the conference tournament. The Eagles advanced to the championship game. For a majority of the season, the Eagles were ranked in the Top 25 of both the Associated Press and the USA Today/WBCA/ESPN Coaches polls. During a week span in February, they found themselves ranked 16th, giving them the highest-ever national ranking. At season's end, senior Nicole Conway was named the Aeropostale BIG EAST Scholar-Athlete. Brianne Stepherson was an ALL-BIG EAST second team selection while Clare Droesch was a BIG EAST All-Rookie choice. Conway and Rachel Byars were Verizon Academic All-District selections, while Stepherson was a district Kodak All-American.

CROSSCOUNTRY

Men's:

Boston Invrogt5 Tw/(Rn ethethrivictrict Kodak)Tj0 -1951 TcOsocult athonor.544 Tw/Cd to the chayGhTa Tfthrivict socult athonorI Twits second

BostoMeetthe Cd to the. Sni's en0(re Wolfinen6 Tw/(.1048 Tre therict Kodak)Tj0 -0111 TD0. majorifid comeet062 Twshe thempet weredepaopnkiol BByr2 TGundrn. haded ALL-BIG) JTJ0 -1.1

Women's:

Eathonorth in1425 Tg DQe Eagler[(adgotReboun[(hisalizn wbouen Coll(Wo35.00378.0050 -1.14 TD0.08703 Tc0athonorTw[(eveache.1o-[crica11 TD rankTsSteph1516 Tth inCrociighst win) JTJ0 -1.1

also helped the Eagles on the links throughout the year.

Women's: The Eagles finished in the top 10 of all but one match they participated in this year. In the fall, BC earned four finishes of ninth or higher and finished as high as fifth place (Mount Holyoke Invitational). In the spring, they continued their team success with a second place finish at the Lady Eagle Invitational, as well as three other top 15 finishes. Six different golfers led the Eagles at least one time and were paced by sophomore Channing Lovejoy (three times) who had a season-best eighth place at the Hartford Invitational.

ICE HOCKEY

Head Coach, Men's: Jerry York

Head Coach, Women's: Tom Babson

Men's:

Record 18-18-2 (10-13-1 HOCKEY EAST)

The team concluded the season with an 18-18-2 mark after struggling with injuries all season. Senior captains Jeff Giuliano and Ales Dolinar led a team that had 16 freshmen and sophomores compared to just six combined juniors and seniors. During the season, the team had streaky success that included key wins over Boston University, Maine, Northeastern and Wisconsin. BC also won the Silverado Shootout, the holiday tournament in Duluth, Minn., with a pair of 5-1 wins over Miami (Ohio) and host Minnesota-Duluth. Offensively, the Eagles were led by sophomores Tony Voce, who ranked among the nation's leaders in six categories and Ben Eaves, who missed almost a third of the season with a rib injury. Eaves was a second team All-American at season's end. Voce was a first team ALL-HOCKEY EAST selection, while Eaves was named team MVP. Freshman Dave Spina was voted to the league's All-Rookie Team.

Women's:

Record 9-19-4 (5-12-3 ECAC East)

The team finished the season with a 9-19-4 record. Its eight wins over Division I opponents were the most in school history. Included in those victories were first-ever NCAA wins over Cornell (14 games) and Providence (16 games). Senior Kelly McManus led the team in scoring with 17 goals and 17 assists for 34 points, earning ECAC Player of the Week honors twice and USCHO National Offensive Player of the Week recognition once. Freshman goaltender Lisa Davis played in 30 of the team's 32 games and set school records for goals against average (2.59), save percentage (.918) and shutouts in a season (four). Davis was named the ECAC Eastern League's Rookie of the Week three times and earned USCHO National Defensive Player of the Week honors for the last week of the regular season.

INDOOR TRACK

Head Coach, Men's and Women's: Tom Babson

Men's:

As an individual, the Eagles placed ninth at the New England

Indoor Track Championships. At the BIG EAST Championship

third-place finish in the

Women's:

fourth and fifth, respectively, at the New England and IGY EAST

Indoor Track Championships, in the 5,000-

GENERAL INFORMATION

PHOTO

Honorary Degrees Awarded by Boston College 1955-2002

1955

Fred J. Driscoll, LL.D.
Christian A. Herter, LL.D.
Edward A. Hogan, Jr., LL.D.*
Rear Adm. Bartholomew W. Hogan, Sc.D.
John B. Hynes, LL.D.
His Beatitude Maximus IV, LL.D.
(August 23, 1955)
Valerian Cardinal Gracias, LL.D.
Russel Kirk, Litt.D.
Edward A. Sullivan, LL.D.

1956

Bartholomew A. Brickley, LL.D.
Peter J. W. Debye, Sc.D.
Most Rev. Frederick A. Donaghy, LL.D.
John F. Kennedy, LL.D.*
John W. King, LL.D.
Charles Munch, D. Mus.
Edward F. Williams, LL.D.

1957

Wallace E. Carroll, LL.D.
Arthur J. Kelly, LL.D.
Augustus C. Long, LL.D.*
Adrian O'Keefe, LL.D.
Very Rev. Msgr. Patrick W. Skehan, LL.D.
Nils Y. Wessell, LL.D.

1958

Most Rev. Amleto G. Cicognani, LL.D.
(April 21, 1958)
Carl J. Gilbert, LL.D.
Paul Horgan, Litt.D.
Barnaby C. Keeney, LL.D.*
Henry M. Leen, LL.D.
Jacques Maritain, LL.D.
Raissa Maritain, LL.D.
Harold Marston Morse, D.Sc.
Rev. John B. Sheerin, C.S.P., LL.D.
Francis Cardinal Spellman, LL.D.
(December 8, 1958)

1959

His Excellency Sean T. O'Kelly, LL.D.
(March 22, 1959)
Ernest Henderson, LL.D.
Rev. John LaFarge, S.J., LL.D.
Henry Cabot Lodge, LL.D.
George Meany, LL.D.

Barbs300.08231000g; LL.D 1 Tf0.0003lacM 40424 T608.5 0 0 8.5 36

- 1977**
 Rev. Raymond Edward Brown, Litt.D.*
 Gerhard D. Bleicken, LL.D.
 Alice Bourneuf, D.Sc.
 James F. McDonough, M.D., D.Sc.
 Maria Tallchief Paschen, D.A.
 Michael Joseph Walsh, Litt.D.
- 1978**
 Bruno Bettelheim, Litt.D.
 Rev. Charles F. Donovan, S.J., L.H.D.
 Charles D. Ferris, LL.D.*
 Marvin E. Frankel, LL.D.
 John William McDevitt, LL.D.
 Leo Perlis, D.S.S.
- 1979**
 Dorothy Baker, D.S.S.
 Edward Patrick Boland, LL.D.
 George P. Donaldson, LL.D.
 Richard Ellmann, L.H.D.
 Robben W. Fleming, L.H.D.
 Walter F. Mondale, LL.D.*
 David S. Nelson, LL.D.*
- 1980**
 Germaine Bree, Litt.D.*
 Albert M. Folkard, L.H.D.
 Edward J. King, D.Pub. Admn.
 Joseph Cardinal Malula, LL.D.
 Thomas Aquinas Murphy, The Ignatius Medal
 (March 16, 1980)
 Bernard J. O'Keefe, D.E.Sc.
 Kevin H. White, LL.D.
- 1981**
 Thomas Cardinal Ó Fiaich, Litt.D.
 (October 23, 1981)
 Rev. Joseph Delphis Gauthier, S.J., L.H.D.
 Margaret M. Heckler, LL.D.
 Rose Fitzgerald Kennedy, L.H.D.
 Donald F. McHenry, LL.D.
 Thomas P. O'Neill, Jr., The Ignatius Medal*
 Joseph Harry Silverstein, D.A.
 Paul Donovan Sullivan, D.S.S.
- 1982**
 Rev. Robert I. Burns, S.J., L.H.D.
 George Bush, LL.D.*
 Robert A. Charpie, D.Sc.
 Dolores Hope, The Ignatius Medal
 (November 6, 1982)
 Josephine L. Taylor, D.Sc.Ed.
- 1983**
 Maya Angelou, L.H.D.
 Virginia A. Henderson, D.N.S.
 Joseph McKenney, D.Ed.
 Rev. Vincent T. O'Keefe, S.J., L.H.D.
 (March 13, 1983)
 Rev. Bruce J. Ritter, O.F.M., D.S.S.*
 An Wang, LL.D.
- 1984**
 Leon Higginbotham, LL.D.
 Richard Hill, D.B.A.
- Most Rev. Bernard F. Law, S.T.D.*
 Robert Merrifield, D.Sc.
 Muriel Sutherland Snowden, D.S.S.
 Otto Phillip Snowden, D.S.S.
- 1985**
 Rev. Frederick Joseph Adelmann, S.J., L.H.D.
 Lena Frances Edwards, D.Sc.
 Rev. J. Bryan Hehir, LL.D.
 Agnes Mongan, D.F.A.
 Anthony John Francis O'Reilly, D.B.A.
 (March 17, 1985)
 Andrew J. Young, LL.D.*
 Edward Zigler, L.H.D.
- 1986**
 Corazon C. Aquino, The Ignatius Medal
 (September 21, 1986)
 Guido Calabresi, LL.D.
 Jacques d'Amboise, D.F.A.
 Annie Dillard, L.H.D.
 Lionel B. Richie, Jr., D.Mus.
 Francis C. Rooney, Jr., D.B.A.
 Jamie Cardinal Sin, S.T.D.*
- 1987**
 Josephine A. Dolan, D.N.S.
 Garret FitzGerald, LL.D.
 Walter E. Massey, D.Sc.
 John G. McElwee, LL.D.
 Rev. Francis W. Sweeney, S.J., L.H.D.
 Vernon A. Walters, LL.D.*
- 1988**
 His Grace, Samuel E. Carter, S.J., S.T.D.*
 Esmé Valerie Eliot, Litt.D.
 Hans-Georg Gadamer, L.H.D.
 Robert Francis O'Malley, D.Sc.
 Richard Alan Smith, LL.D.
 Paul A. Volcker, LL.D.
- 1989**
 Thea Bowman, F.S.P.A., R.D.
 George E. Doty, The Ignatius Medal
 (April 6, 1989)
 Jonathan Kozol, D.S.S.*
 Thomas S. Murphy, LL.D.
 Kenneth Gilmore Ryder, D.Sc.Ed.
 Richard Francis Syron, LL.D.
 (March 18, 1989)
 Jerzy Turowicz, L.H.D.
- 1990**
 Edward A. Brennan, D.B.A.
 Thomas J. Brokaw, L.H.D.*
 Raymond G. Chambers, The Ignatius Medal
 (April 5, 1990)
 Franklyn G. Jenifer, LL.D.
 Rev. César A. Jerez, S.J., L.H.D.
 Eunice Kennedy Shriver, L.H.D.
 Robert M. Solow, LL.D.
- 1991**
 William Aramony, The Ignatius Medal
 (April 18, 1991)
- Raymond Edward Brown, S.S., The Ignatius Medal
 (July 25, 1991)
 John J. Curtin, Jr., LL.D.
 Rev. Timothy S. Healy, S.J., L.H.D.*
 Seamus J. Heaney, Litt.D.
 Rachel A. Robinson, D.Sc.Ed.
 John R. Smith, D.B.A.
- 1992**
 Barbara Bush, The Ignatius Medal
 (April 2, 1992)
 Mary Ann Glendon, LL.D.
 Roberto C. Goizueta, D.B.A.
 John E. Jacob, L.H.D.
 John J. Moakley, LL.D.
 Caroline C. Putnam, R.S.C.J., D.F.A.
 Warren B. Rudman, LL.D.*
- 1993**
 Jack Kemp, The Ignatius Medal
 (April 22, 1993)
 William J. Vouté, The Ignatius Medal
 (April 22, 1993)
 Queen Noor of Jordan, LL.D.*
 James F. Cleary, D.B.A.
 Elias J. Corey, D.Sc.
 Henry E. Hampton, L.H.D.
 Thérèse Higgins, C.S.J., L.H.D.
 Thomas H. O'Connor, L.H.D.
 John T. Williams, D.Mus.
- 1994**
 Daniel P. Tully, The Ignatius Medal
 (April 21, 1994)
 James P. Comer, LL.D.
 Louis V. Gerstner, Jr., D.B.A.
 Frances Hesselbein, L.H.D.
 Corinne Boggs Roberts, LL.D.*
 Donald J. White, L.H.D.
- 1995**
 Rita Dove, L.H.D.
 John Hume, LL.D.*
 Teddy Kollek, LL.D.
 Peter S. Lynch, LL.D.
 Cornelius Clarkson Vermeule, III, L.H.D.
- 1996**
 Lawrence A. Bossidy, The President's Medal
 for Excellence (April 18, 1996)
 T. Berry Brazelton, LL.D.
 William M. Bulger, LL.D.
 William H. Cosby, L.H.D.*
 Marian L. Heard, D. Pub. Adm.
 Michael J. Mansfield, The Speaker Thomas P.
 O'Neill, Jr. Award for Distinguished
 Citizenship
 J. Donald Monan, S.J., LL.D.
- 1997**
 John S. Chalsty, The President's Medal for
 Excellence (April 17, 1997)
 Peter Dervan, D.Sc.
 Roger Cardinal Etchegaray, LL.D.
 John A. McNeice, Jr., D.B.A.

Bernice Johnson Reagon, L.H.D.
Janet Reno, LL.D.*

1998

An Taoiseach Bertie Ahern, T.D., LL.D.*
Archibald Cox, The Speaker Thomas P. O'Neill, Jr. Award
for Distinguished Citizenship
Margaret A. Dwyer, LL.D.
John N. Hatsopoulos, D.B.A.
Catalina Montes, L.H.D.
James W. Skehan, S.J., D.Sc.
Frank G. Zarb, The President's Medal for Excellence
(April 16, 1998)

1999

Richard A. Grasso, The President's Medal for Excellence
(April 15, 1999)
Anna Faith Jones, L.H.D.
Alice E. McDermott, L.H.D.
Bill Richardson, LL.D.*
William F. Russell, L.H.D.
David Trimble, LL.D.

2000

Fayette M. Long, L.H.D.
Jaime Cardinal Ortega y Alamino, LL.D.
Richard W. Riley*
Kip Tiernan, L.H.D.
Sanford L. Weill, The President's Medal for Excellence
(April 13, 2000)
Robert C. Wright, LL.D.

2001

Francis B. Campanella, LL.D.
Thomas S. Durant, MD, L.H.D.
John J. Moakley, The Speaker Thomas P. O'Neill, Jr. Award
for Distinguished Citizenship
Clare S. Pratt, RSCJ, L.H.D.
Patrick E. Roche, D.B.A.
John F. Smith, Jr. The President's Medal for Excellence
(April 19, 2001)
Cherryl Thomas, D.Pub.Adm.
Tommy G. Thompson, LL.D.*

2002

R. Nicholas Burns, LL.D.*
Rev. Robert J. Bowers, L.H.D.
Charles Dolan, The President's Medal for Excellence
(April 18, 2002)
Sara Lawrence-Lightfoot, L.H.D.
Rev. John W. O'Malley, S.J., L.H.D.
Sister Marie Santry, S.N.D. de Namur, L.H.D.
Elisabeth Zweig Leoni, D.Pub.Adm.

* Commencement Speakers.
Source: President's Office

Types of Degrees Conferred at Boston College

Bachelor of Arts (A.B.)
Bachelor of Science (B.S.)
Master of Arts (M.A.)
Master of Arts in Teaching (M.A.T.)
Master of Business Administration (M.B.A.)
Master of Education (M.Ed.)
Master of Science (M.S.)
Master of Science in Teaching (M.S.T.)
Master of Social Work (M.S.W.)
Certificate of Advanced Educational Specialization (C.A.E.S.)
Certificate of Advanced Graduate Studies (C.A.G.S.)
Doctor of Philosophy (Ph.D.)
Doctor of Law (J.D.)

Honorary Degrees Granted by Boston College

| | |
|--------------|---|
| D.A. | Doctor of Arts |
| D.B.A. | Doctor of Business Administration |
| D.C.S. | Doctor of Commercial Science |
| D.E.Sc. | Doctor of Engineering Science |
| D.F.A. | Doctor of Fine Arts |
| D.Journ. | Doctor of Journalism |
| D.Mus. | Doctor of Music |
| D.N.S. | Doctor of Nursing Science |
| D.Pub.Adm. | Doctor of Public Administration |
| D.Sc. | Doctor of Science |
| D.Sc.Ed. | Doctor of Science in Education |
| D.Sc.L. | Doctor of the Science of Law |
| D.Sc.T. | Doctor of the Science of Theology |
| D.S.S. | Doctor of Social Science |
| H.D. | Doctor of History |
| Hist.Phil.D. | Doctor of History in Philosophy |
| J.U.D. | Doctor of Civil and Canon Laws |
| LL.D. | Doctor of Laws |
| L.H.D. | Doctor of Humane Letters |
| Litt.D. | Doctor of Letters, Doctor of Literature |
| R.D. | Doctor of Religion |
| S.T.D. | Doctor of Sacred Theology |
| Sc.D. | Doctor of Science |

Source: Commencement Programs, 1955 - present

Accrediting Agencies

AACSB International - Association to Advance Collegiate
Schools of Business
American Bar Association
American Chemical Society
American Psychological Association

Academic Department Locations

| | |
|---|-------------------------------------|
| Accounting Department | Fulton 520 |
| Advancing Studies, College of | McGuinn 100 |
| Arts and Sciences, College of | Gasson 109A |
| Arts and Sciences, Graduate School of | McGuinn 221 |
| Biology Department | Higgins 355 |
| Business Law Department | Fulton 420 |
| Chemistry Department | Merkert 125 |
| Classical Studies Department | Carney 122 |
| Communication Department | Lyons 215 |
| Computer Science Department | Fulton 460 |
| Counseling, Developmental Psychology, and Research Methods Department | Campion 309 |
| Counseling Services | Gasson 108, Campion 301, Fulton 254 |
| Economics Department | Carney 131 |
| Educational Administration and Higher Education | Campion 205 |
| Education, Lynch School of | Campion 103 |
| English Department | Carney 446 |
| Finance Department | Fulton 330 |
| Fine Arts Department | Devlin 434 |
| Geology and Geophysics Department | Devlin 213 |
| Germanic Studies Department | Lyons 201 |
| History Department | Carney 116 |
| Honors Programs | |
| Arts and Sciences | Gasson 102 |
| Education | Campion 104 |
| Management | Fulton 226A |
| Language Laboratory | Lyons 313 |
| Law School | Stuart Hall, Newton Campus |
| Management Center | Fulton 556 |
| Management, Graduate Program | Fulton 320 |
| Management, Undergraduate Program | Fulton 360 |
| Marketing Department | Fulton 450 |
| Mathematics Department | Carney 374 |
| Music Department | Lyons 407 |
| Nursing, Connell School of | Cushing 202 |
| Operations and Strategic Management Department | Fulton 350 |
| Organizational Studies Program | Fulton 430 |
| Philosophy Department | Carney 251 |
| Physics Department | Higgins 355 |
| Political Science Department | McGuinn 201 |
| Psychology Department | McGuinn 301 |
| Religious Education and Pastoral Ministry, Institute of | 31 Lawrence Avenue |
| Litns aurestm | |

Academic Calendars

2002-2003

Fall Semester

| | |
|-------------|---|
| August 26 | Monday: Classes begin for 2nd and 3rd year law students |
| August 28 | Wednesday: Classes begin for 1st year law students |
| September 2 | Monday: Labor Day - No classes |
| September 3 | Tuesday: Classes begin |
| September 4 | |

2003-2004

Fall Semester

| | |
|--------------------|---|
| August 25 | Monday: Classes begin for 2nd and 3rd year law students |
| August 26 | Tuesday: Classes begin for 1st year law students |
| September 1 | Monday: Labor Day - No classes |
| September 2 | Tuesday: Classes begin |
| October 13 | Monday: Columbus Day - No classes |
| November 26 - 28 | Wednesday - Friday: Thanksgiving Holidays |
| December 10 and 11 | Wednesday and Thursday: Study days - No classes for undergraduate day students only |
| December 12 - 19 | Friday - Friday: Term examinations |

Spring Semester

| | |
|--------------------|--|
| January 5 | Monday: Classes begin for all law students |
| January 19 | Monday: Martin Luther King, Jr. Day - No Classes |
| January 20 | Tuesday: Classes begin |
| March 1 - 5 | Monday - Friday: Spring Vacation |
| April 8 - April 12 | No Classes: Holy Thursday - Good Friday - Easter Monday (except classes beginning at 4:00 pm and later) |
| April 19 | Monday: Patriots Day - No Classes |
| May 7 and 10 | Friday to Monday: Study days - No classes for undergraduate day students only |
| May 11 - 18 | Tuesday - Tuesday: Term examinations |
| May 24 | Monday: Commencement |
| May 28 | Friday: Law School Commencement |

Source: Office of the Academic Vice President

Fact Book Index

- Academic Administration, 16
 Academic Calendars, 106
 Academic Department Locations, 105
 Academic Development Center, 79
 Academic Resources & Technologies, 76-81
 Academic Vice President Units, 18
 Accrediting Agencies, 104
 Administration & Faculty, 14-25
 Administrators, University, 20
 Administrative Staff, See Personnel
 Advancing Studies Enrollment, 31-33
 AHANA and International Student Enrollment, 32
 Alumni & Development, 50-57
 Alumni Association Board of Directors, 50
 Alumni Awards, 50
 Alumni by Primary School, Gender, and Class, 52-54
 Alumni Clubs, 50
 Alumni Donors by Primary School and Class, 56-57
 Alumni, Geographic Distribution, 51
 Applications, Acceptances, and Enrollment, Freshman, 28
 Applications, Acceptances, and Enrollment, Transfer Students, 30
 Archives, University, 79
 Art, McMullen Museum of, 80
 Association Memberships, 104
 Athletics, 94-97
- Board of Trustee Chairmen, 14
 Board of Trustee Membership, 14
 Boston College, A Brief History, 6
 Boston College, A Chronology, 7-9
 Boston College Profile, 11
 Boston College Properties, 62
 Building Use, Summary, 65
 Buildings and Grounds, See Physical Plant
 Buildings, Boston College, 60-61
 Burns Library, 78
- Campus Maps, 109-110
 Career Plans of Seniors, 47
 Chairmen, Board of Trustees, 14
 Chairpersons, Department, 16
 Charts of Administration, 17-19
 Classrooms, 65
 Compensation, Faculty, 25
 Computer Network Elements, 81
 Contracts and Grants, See Research & Sponsored Projects
 Cross Application Competitor Schools, 30
- Deans, Academic, See Academic Administration
 Degrees Conferred at Boston College, Types, 103
 Degrees Conferred, 40-44
 Department Chairpersons, 16
 Dining Facilities, 64
 Donors by Giving Club, 55
- Dormitories, See Residence Halls
- Educational Plans of Seniors, 47
 Enrollment, Advancing Studies, 31-33
 Enrollment, Full-Time Equivalent, 33
 Enrollment, Full-Time Freshman by Year and Gender, 28
 Enrollment, Graduate, by Degree Program and Discipline, 34
 Enrollment, Graduate, by School, Gender, and Full- and Part-Time, 31-32
 Enrollment, International Students, 32, 38-39
 Enrollment, Minority Students, See AHANA
- Enrollment, Summer Session, 34
 Enrollment, Transfer Students, 30
 Enrollment, Undergraduate by School, Gender, and Full- and Part-Time, 31-32
 Enrollment, Undergraduate Majors by School, 36
 Evening College, see Advancing Studies
 Executive Vice President Units, 19
- Facilities, See Physical Plant
 Facility Capacities, 63-64
 Faculty, Administration &, 14-25
 Faculty, Compensation by Rank, 25
 Faculty, by Highest Earned Degree and Gender, 23
 Faculty, by Highest Earned Degree and Rank, 23
 Faculty, by Rank and Gender, 24
 Faculty, by School and Gender, 22
 Faculty, by School and Rank, 22
 Faculty, by School and Tenure Status, 23
 Faculty, Full-Time Equivalent by School, 22
 Faculty, Full-Time, Teaching Fellows, Teaching Assistants by School and Department, 24
 Finance, 70-73
 Financial Aid, Undergraduate and Graduate, 45
 Financial Operations, Highlights, 70
 Financial Position Statement, Condensed, 71
 Foreign Students, See International Students
 Foreword, 2
 Founder of Boston College, 100
 Freshman Admission Profile, 28
 Freshman Applications, Acceptances, and Enrollment, 28
 Freshman, Full-Time, Enrollment by Year and Gender, 28
 Freshman, Geographic Distribution, 29
 Full-Time Equivalent Enrollment, 33
 Fund Raising, See Alumni & Development
- General Information, 100-110
 Geographic Distribution, Alumni, 51
 Geographic Distribution, Freshman, 29
 Geographic Distribution, Undergraduates, 35
 Geographic Distribution, Undergraduate and Graduate International Students, 39
 Gifts to the University, 55

Fact Book Index (Continued)

- Graduate Degrees Conferred, 40, 44, 103
 Graduate Enrollment by Degree Program and Discipline, 34
 Graduate Enrollment by Gender, 31-32
 Graduate Enrollment by School, 31-32
 Graduate Enrollment, Full- and Part-Time, 31-32
 Graduation and Retention Rates, 47
 Grants, See Research & Sponsored Projects
- History, Boston College, 6-9
 Honorary Degrees Awarded, 100-103
 Honorary Degrees, Types Granted, 103
- Information Technology, 77, 80-81
 Intercollegiate Athletic Season Highlights, 94-97
 Intercollegiate Sports Participation, 97
 International Student and Scholar Statistics, 32, 38-39
 Intramural Sports Participation, 97
- Jesuit Community at Boston College, 15
- Language Laboratory, 79
 Libraries, 76
 Library Expenditures, 76
 Library Holdings, 76
 Library Services, 77
 Library Special Collections, 78
 Library Use Statistics, 76
- Majors, Undergraduate, 36-37
 Maps, Campus, 109-110
 McMullen Museum of Art, 80
 Minority Student Enrollment, See AHANA
 Mission Statement, 2
- Network Elements, 81
- Officers of the University, 16
 Offices, 65
 Organization Chart, Administration, 17
 Organization Chart, Academic Vice President, 18
 Organization Chart, Executive Vice President, 19
- Personnel, Professional, Administrative, and Support Staff, 21
 Personnel, Restricted Funded, 21
 Physical Plant, 60-67
 Presidents of Boston College, 100
 Professional Staff, See Personnel
 Profile, Boston College, 11
 Properties, Boston College, 62
- Residence Hall Capacities, 66
- Restricted Funded Personnel, 21
- SAT, Average by Class, Freshman Enrollees, 28
Senior Survey, 47
 Sources of *Fact Book* Information, 106
 Special Collections, 78
 Sponsored Activities, Highlights, 84
 Sponsored Project Awards Summary, 84
 Sponsored Projects by Department, 85
 Sponsored Projects, Number and Dollar Amount Awards, 84
 Sponsored Projects, Proposals Submitted, 88
 Sponsored Projects, Selected Awards, 89
 Sponsored Projects, Source and Application, 84
 Sports Participation, Intercollegiate Statistics, 97
 Sports Records, Varsity, 97
 Student Credit Hours by School, 31
 Student Learning and Support Center, 80
 Students, 28-47
 Students Studying Abroad, 46
 Summer Session Enrollment, 34
 Support Staff, See Personnel
- Table of Contents, 3-5
 Teaching Fellows, Teaching Assistants, and Full-Time Faculty, 24
 Technology, 77, 80-81
 Telephone Infrastructure, 80
 Transfer Students, Applications, Acceptances, and